



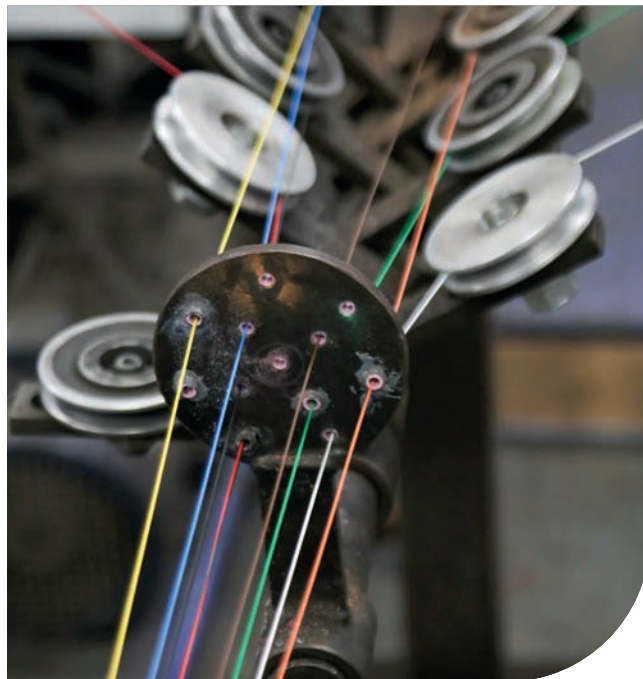
\ Cable \



Since 1985 CQR has been manufacturing specialist cables for the security industry. CQR cable sets the standard in quality, with industry-leading performance across tensile strength, flexibility and low resistance. Ensure system compliance with our brochure guides to Euroclass and BS4737 cables.

CATEGORY CABLES

CQR has introduced a new range of high-quality category cables, designed to meet the demands of modern data and communication networks. Our cables are engineered to deliver reliable performance, supporting fast and stable data transmission for commercial installations. Whether you're setting up an IP CCTV system, structured cabling for IT infrastructure, or smart home technology, CQR's category cables provide the durability and signal integrity needed for long-lasting, professional results. CQR category cables are provided as standard in REELEX® patented winder boxes, allowing for 30% faster and tangle-free installs.



INTRUDER ALARM CABLES

Professional Copper & Copper Clad Aluminum (CCA)

CQR sets the standard in quality, with market-leading low resistance, ease of stripping, and reassuring flexibility. Available in both professional full copper and copper clad aluminum versions, we have you covered for any site.

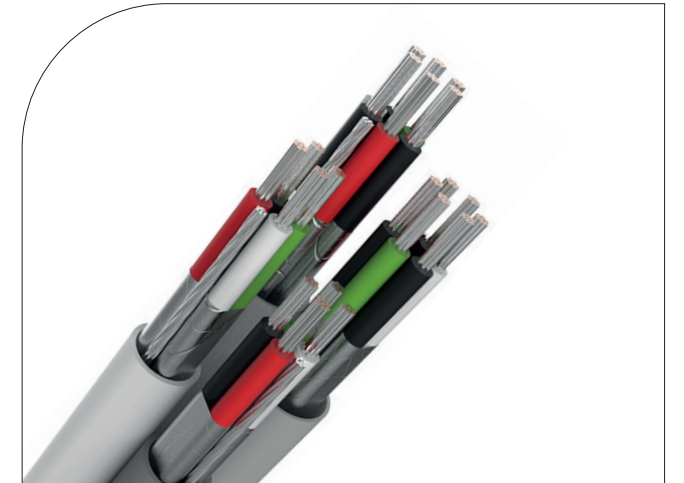
Ensure system integrity with professional copper cable. While a copper clad aluminum (CCA) cable can be up to half the initial cost of professional full copper versions, CCA's brittle construction and average copper content of less than 20% make it susceptible to over 50% higher resistance and increased risk of cable snaps due to low tensile strength. On basic systems, CCA can provide a simple, cost-effective solution for small commercial and domestic installs, but for larger systems where integrity matters, always choose professional copper.

CQR works with leading third-party cable test house institutions to carry out our product certification, research, and development—constantly striving to improve our cables for the installer. Our range includes a full selection of CPR Euroclass cables, from B2 to Fca standards, supported by multiple sheathing options and BS 4737 variants.

SPECIALIST CABLES

BELDEN EQUIVALENT CABLES

Our range of Belden equivalents began with a core selection of cables designed for access control and intruder alarm systems. Since then, it has expanded to include a wider variety of control cables, offering multiple sheathing options and Euroclass ratings from B2 to Fca. CQR delivers consistent, reliable quality—giving installers and wholesalers a trusted, cost-effective alternative to Belden.



MANUFACTURING HERITAGE

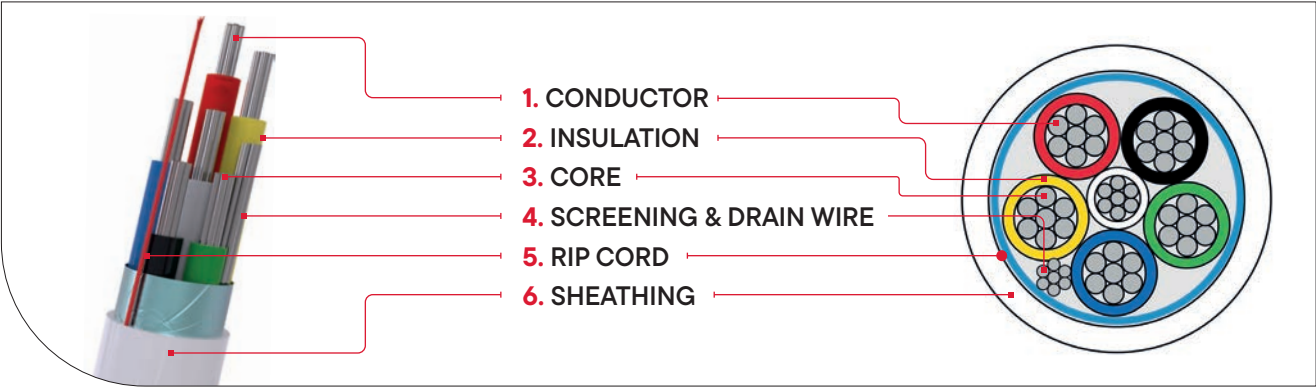
Since beginning cable manufacturing in 1985, we've produced over 20 million meters of intruder alarm and specialist cables. Installed in more than 70 countries worldwide, CQR cable is trusted globally for its "fit and forget" reliability—ensuring dependable system connections.

BUILDING FOR THE FUTURE

In 2024, CQR expanded its UK manufacturing facility, increasing production capacity to over 2 million meters per year. This investment has enabled the development of additional cable variants, including an expanded range of Euroclass cables—covering both multi-core and solid-core options across our branded and private label channels.



UNDERSTANDING INTRUDER ALARM & LOW VOLTAGE CABLES



1. CONDUCTOR:

- Is the part of the cable which has the specific function of carrying current and/or signals.
- The conductor is typically measured in either cross sectional Area (CSA) or American Wire Gauge (AWG).
- Solid or stranded conductors are available for different cable types. Solid core cables are for data transmission found on Category cables. Stranded conductors are typically found on intruder alarm and Belden equivalent cables and are more flexible to work with.
- Dependent on the cable type the conductor size will be different, for example on Intruder Alarm Cable it is typically 7 x Ø0.182mm in diameter whereas for Belden equivalents are at 7 x Ø0.194mm and Category Cables such as Cat 6 1 x Ø0.53mm. The conductor sizes varies dependent on the power and data requirements needed.
- Intruder alarm cables are available in tinned copper (professional) and CCA (Tinned Copper Clad Aluminum) economy cables.
- Category cables and Belden equivalent cables are only available in full copper due to their data transmission requirements not being suitable for lower grade conductors.

2. INSULATION:

- A layer of material applied around the conductor with the specific function of resisting current flow between adjacent conductors.
- Types of insulation include PVC (Polyvinyl Chloride) & LSZH (Low Smoke Zero Halogen).
- LSZH cables do not emit toxic fumes when they burn, unlike the cheaper and more common PVC variant.

3. CORE:

- A single conductor with its own insulation.
- Dependent on the cable type the number of cores will vary, for example intruder alarm cables are available bunched and in 2 to 12 cores, with 6 & 8 core being the most commonly used.
- Category cables are twisted in pairs to reduce cross talk between the pairs of cables
- Belden equivalent cables vary between pairs, bunched and twisted pairs.
- Cores are available in a range of colours:

CORE COLOURS FOR CABLE

STANDARD COLOURS	COLOUR	2 CORE	4 CORE	6 CORE	8 CORE	10 CORE	12 CORE
	RED	✓	✓	✓	✓	✓	✓
	BLACK	✓	✓	✓	✓	✓	✓
	BLUE		✓	✓	✓	✓	✓
	YELLOW		✓	✓	✓	✓	✓
	GREEN			✓	✓	✓	✓
	WHITE			✓	✓	✓	✓
	ORANGE				✓	✓	✓
	BROWN				✓	✓	✓
	VIOLET					✓	✓
	GREY					✓	✓
POWER AND DATA COLOURS	TURQUOISE						✓
	PINK						✓

POWER AND DATA COLOURS	COLOUR	4 CORE	6 CORE	6 CORE PD	8 CORE PD	10 CORE	12 CORE PD
	RED	✓	✓	P	P	✓	P
	BLACK	✓	✓	P	P	✓	P
	BLUE		✓	✓	✓	✓	✓
	YELLOW	✓			✓	✓	✓
	GREEN	✓	✓	✓	✓	✓	✓
	WHITE	✓	✓	✓	✓	✓	✓
	ORANGE				✓	✓	✓
	BROWN		✓	✓	✓	✓	✓
	VIOLET					✓	✓
	GREY					✓	✓
AB POWER AND DATA COLOURS	TURQUOISE						✓
	PINK						✓

AB POWER AND DATA COLOURS	COLOUR	4 CORE	6 CORE	6 CORE PD	8 CORE	8 CORE PD	10 CORE PD
	RED	✓	✓	P ✓	✓	P ✓	P ✓
	BLACK			P		P	P
	BLUE		✓		✓		
	YELLOW	✓	✓	✓	✓	✓	✓
	GREEN	✓	✓	✓	✓	✓	✓
	WHITE	✓	✓	✓	✓	✓	✓
	ORANGE	✓	✓	✓	✓	✓	✓
	BROWN				✓		✓
	VIOLET						
	GREY		✓		✓	✓	✓
AB POWER AND DATA COLOURS	TURQUOISE				✓		✓
	PINK						

4. SCREENING & DRAIN WIRE:

- The screen is a metallic layer which serves to confine the electrical field within the cable and / or to protect the cable from external electrical influences.
- The drain wire is an uninsulated wire laid in contact with the screen.
- The drain wire should be connected to a single earth point typically in a control panel.
- Screened cables are useful for reducing electrical interference which maybe present due to constraints of wiring within the premises.

5. RIP CORD:

- Is a nylon cord used to aid the removal of the sheathing to expose the cores for ease of installation.
- The rip cord is also coloured to identify the variant such as with BS4737 with Type 1 cables having a green rip cord, Type 2 red rip cord and Type 3 yellow rip cord.

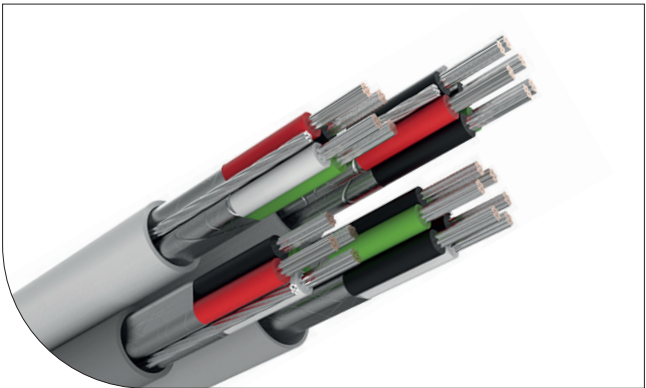
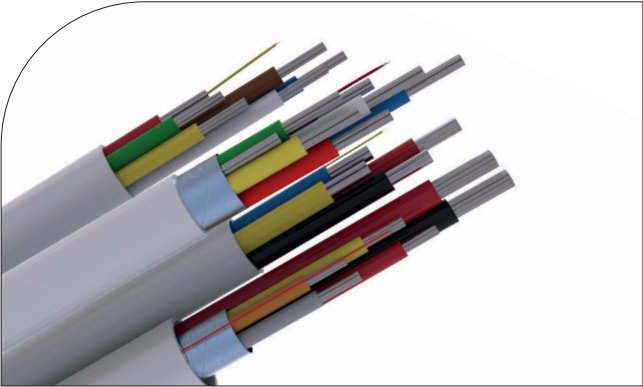
6. SHEATHING:

- Uniform and continuous covering of non-metallic material giving mechanical protection and/or additional to cores or core in a cable.
- Sheathing types PVC (Polyvinyl Chloride), LSF (Low smoke and fume polyvinyl chloride) and LSZH (Low smoke zero halogen), PE, (Poly Ethylene) & HDPE (High Density Poly Ethylene).
- LSZH cables do not emit toxic fumes when they burn, unlike the cheaper and more common PVC variant.

UNDERSTANDING CABLE: TYPES OF CABLE

INTRUDER ALARM CABLE

- Stranded, Solid & Power and Data Versions
- Conductor Types: Professional Tinned Copper & Economy Copper Clad Aluminum
 - Multi Core : 2-12 Core
- Sheathings : PVC, LSF and LSZH
 - Screened / Shielded Options
- Euroclass : B2ca, Cca, Dca, Eca
- BS4737-3.30: Type 1, 2 & 3 Cables
- Lengths 100 / 200 / 300 & 500m – Boxes & Reels
 - Made in the UK

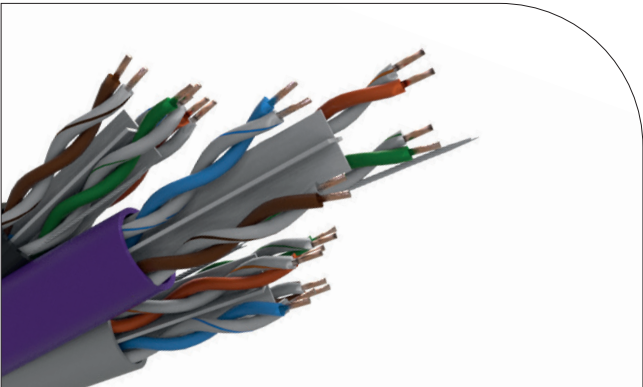


BELDEN EQUIVALENT CABLES

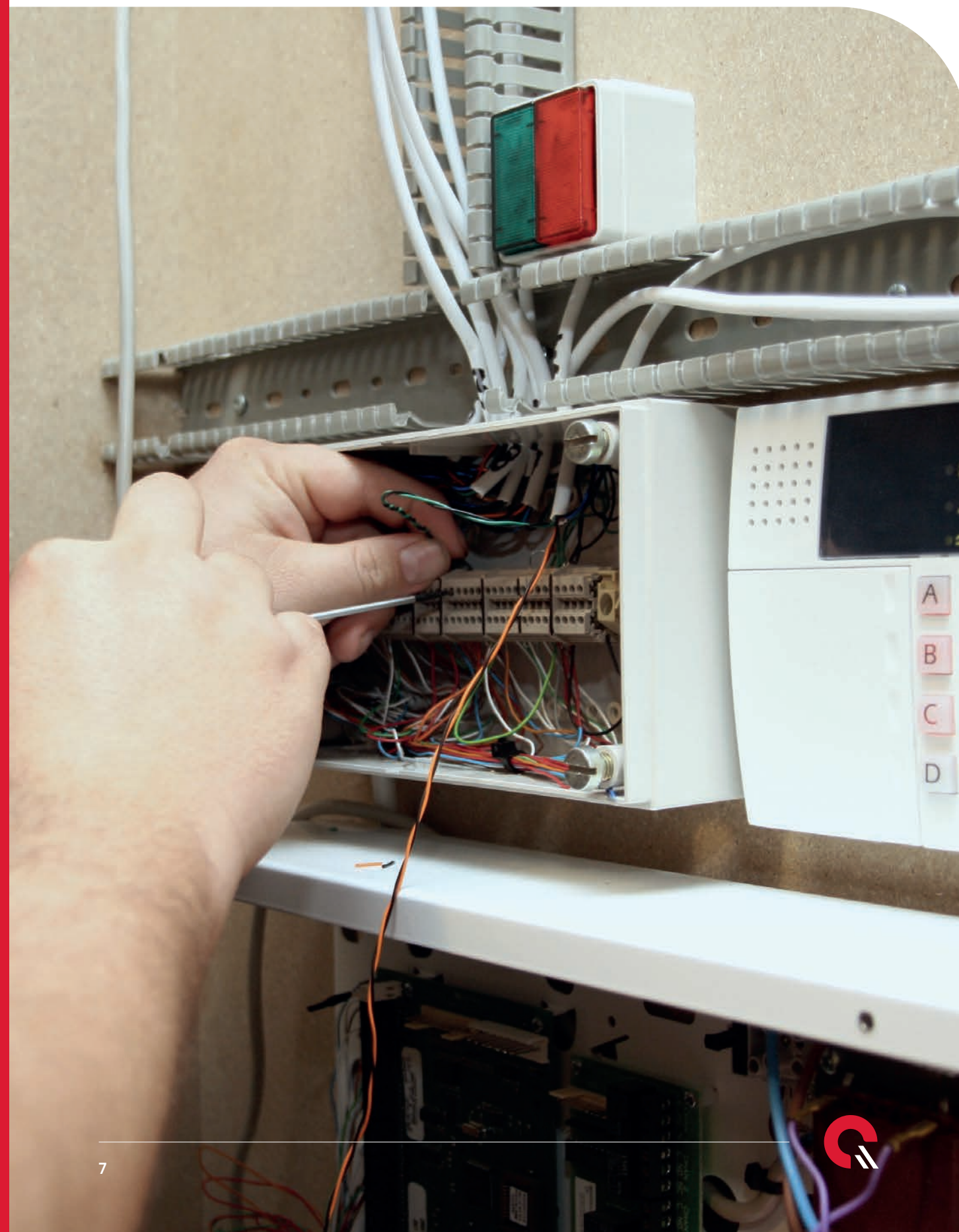
- Professional Tinned Copper Conductor
- Multi Core : 2 & 3 Pairs & Bunched 6, 8 & 10 Cores
- Sheathings : PVC, LSF, LSZH & HDPE
- Screened / Shielded as Standard
- Belden equivalents to : 8723, 8777, 9536, 9538 & 9540
- Euroclass : B2ca, Cca, Dca, Eca, Fca
- BS4737-3.30: Type 1, 2 & 3 Cables
- Lengths 100 / 200 / 300 & 500m – Boxes & Reels
- Made in the UK

CATEGORY CABLES

- Twisted Solid Cores
- Professional Copper Conductor
- Cat5e & Cat 6 UTP (Unshielded twist pairs)
- Realex® Winder Boxes : Smooth runs and easy payout
- Sheathings: PVC, LSZH & PE
 - Euroclass : Eca & Fca
- Lengths : 100m & 305m



7	INTRUDER ALARM CABLE
8	Intruder Alarm Cable: PVC
9	Intruder Alarm Cable: LSF (Low Smoke and Fume)
10	Intruder Alarm Cable: LSZH (Low Smoke Zero Halogen)
11	Intruder Alarm Cable: Power & Data Cable
11	Intruder Alarm Cable: Solid Core
12	BELDEN EQUIVALENT CABLE
13	Belden Equivalents: 8723
13	Belden Equivalents: 8777
14	Belden Equivalents: 9536
14	Belden Equivalents: 9538
15	Belden Equivalents: 9540
16	CATEGORY CABLES
17-18	Cat5e Cable
18-19	Cat6 Cable
20	CABLE SPECIFIERS: EUROCLASS & BS4737
21-25	Understanding CPR - Classification According to Fire Performance
26	B2ca: Low Voltage: Euroclass Cables
27	Cca: Low Voltage: Euroclass Cables
28	Dca: Low Voltage: Euroclass Cable
29-31	Eca: Low Voltage: Euroclass Cables
32	Fca: Low Voltage: Euroclass Cables
33	Understanding BS4737-3.30:2015
34-35	TYPE 1: Intruder Alarm Cable
36-37	TYPE 2: Intruder Alarm Cable
38	TYPE 3: Intruder Alarm Cable



INTRUDER ALARM CABLE - PVC



PROFESSIONAL TINNED COPPER

- CQR Professional Copper Cable PVC
- PVC Sheathing
- Intruder / Alarm Cable
- 4 – 12 Core Tinned Copper
- Multi Core
- 0.182 mm² CSA Conductor
- American Wire Gauge : 25 AWG
- Available in white & brown
- Made in the UK



SCAN THE
QR CODE TO VIEW
THE DATA SHEET

PART CODE	NO. OF CORES	CONDUCTOR TYPE	MULTI OR SOLID CORE	SCREENED (Y/N)	COLOUR	LENGTH (METERS)	EUROCLASS	BS4737 TYPE
CAB4/WH/100M	4	Tinned Copper	Multi Core	No	White	100	Eca	Type 2
CAB4/BR/100M	4	Tinned Copper	Multi Core	No	Brown	100	Eca	Type 2
CABS4/WH/100M	4	Tinned Copper	Multi Core	Yes	White	100	Eca	Type 2
CABS4/WH/200M	4	Tinned Copper	Multi Core	Yes	White	200	Eca	Type 2
CAB6/WH/100M	6	Tinned Copper	Multi Core	No	White	100	Eca	Type 2
CAB6/WH/200M	6	Tinned Copper	Multi Core	No	White	200	Eca	Type 2
CAB6/WH/300M	6	Tinned Copper	Multi Core	No	White	300	Eca	Type 2
CAB6/WH/500M	6	Tinned Copper	Multi Core	No	White	500	Eca	Type 2
CAB6/BR/100M	6	Tinned Copper	Multi Core	No	Brown	100	Eca	Type 2
CABS6/WH/100M	6	Tinned Copper	Multi Core	Yes	White	100	Eca	Type 2
CABS6/WH/200M	6	Tinned Copper	Multi Core	Yes	White	200	Eca	Type 2
CABS6/WH/500M	6	Tinned Copper	Multi Core	Yes	White	500	Eca	Type 2
CAB8/WH/100M	8	Tinned Copper	Multi Core	No	White	100	Eca	Type 2
CAB8/WH/200M	8	Tinned Copper	Multi Core	No	White	200	Eca	Type 2
CAB8/WH/300M	8	Tinned Copper	Multi Core	No	White	300	Eca	Type 2
CAB8/WH/500M	8	Tinned Copper	Multi Core	No	White	500	Eca	Type 2
CAB8/BR/100M	8	Tinned Copper	Multi Core	No	Brown	100	Eca	Type 2
CABS8/WH/100M	8	Tinned Copper	Multi Core	Yes	White	100	Eca	Type 2
CABS8/WH/200M	8	Tinned Copper	Multi Core	Yes	White	200	Eca	Type 2
CABS8/WH/500M	8	Tinned Copper	Multi Core	Yes	White	500	Eca	Type 2
CAB12/WH/100M	12	Tinned Copper	Multi Core	No	White	100	Eca	Type 2
CAB12/WH/200M	12	Tinned Copper	Multi Core	No	White	200	Eca	Type 2
CAB12/WH/300M	12	Tinned Copper	Multi Core	No	White	300	Eca	Type 2
CABS12/WH/100M	12	Tinned Copper	Multi Core	Yes	White	100	Eca	Type 2
CABS12/WH/500M	12	Tinned Copper	Multi Core	Yes	White	500	Eca	Type 2

COPPER CLAD ALUMINIUM (CCA)

- CQR Economy CCA Cable PVC
- PVC Sheathing
- Ideal for short runs at basic systems
- Intruder / Alarm Cable
- 6 – 8 Core Tinned Copper
- Multi Core
- 0.22 mm² CSA Conductor
- American Wire Gauge : 24 AWG
- Available in white only



SCAN THE
QR CODE TO VIEW
THE DATA SHEET

PART CODE	NO. OF CORES	CONDUCTOR TYPE	MULTI OR SOLID CORE	SCREENED (Y/N)	COLOUR	LENGTH (METERS)	EUROCLASS	BS4737 TYPE
CABCCA6/WH/100M	6	Copper Clad Aluminium	Multi Core	No	White	100	Eca	Type 3
CABCCA8/WH/100M	8	Copper Clad Aluminium	Multi Core	No	White	100	Eca	Type 3
CABCCA8/WH/100M	8	Copper Clad Aluminium	Multi Core	Yes	White	100	Eca	Type 3

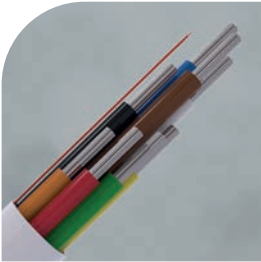


INTRUDER ALARM CABLE - LSF (Low Smoke and Fume)



PROFESSIONAL TINNED COPPER

- CQR Professional Copper Cable LSF
- Low Smoke and Fume Sheathing
- Intruder / Alarm Cable
- 6 – 8 Core Tinned Copper
- Multi Core
- 0.182 mm² CSA Conductor
- American Wire Gauge : 25 AWG
- Available in white only
- Made in the UK

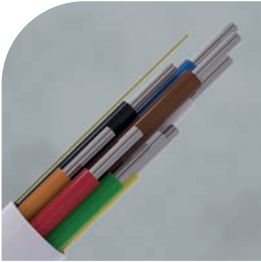


SCAN THE
QR CODE TO VIEW
THE DATA SHEET

PART CODE	NO. OF CORES	CONDUCTOR TYPE	MULTI OR SOLID CORE	SCREENED (Y/N)	COLOUR	LENGTH (METERS)	EUROCLASS	BS4737 TYPE
CAB6/WH/LSF/100	6	Tinned Copper	Multi Core	No	White	100	Eca	Type 2
CAB8/WH/LSF/100	8	Tinned Copper	Multi Core	No	White	100	Eca	Type 2
CAB8/WH/LSF/200	8	Tinned Copper	Multi Core	No	White	200	Eca	Type 2
CAB8/WH/LSF/500	8	Tinned Copper	Multi Core	No	White	500	Eca	Type 2
CABS8/WH/LSF/100	8	Tinned Copper	Multi Core	Yes	White	100	Eca	Type 2
CABS8/WH/LSF/200	8	Tinned Copper	Multi Core	Yes	White	200	Eca	Type 2

COPPER CLAD ALUMINIUM (CCA)

- CQR Economy CCA Cable LSF
- Low Smoke and Fume Sheathing
- Ideal for short runs at basic systems
- Intruder / Alarm Cable
- 8 Core Tinned Copper
- Multi Core
- 0.22 mm² CSA Conductor
- American Wire Gauge : 24 AWG
- Available in white only



SCAN THE
QR CODE TO VIEW
THE DATA SHEET

PART CODE	NO. OF CORES	CONDUCTOR TYPE	MULTI OR SOLID CORE	SCREENED (Y/N)	COLOUR	LENGTH (METERS)	EUROCLASS	BS4737 TYPE
CABCCA8/WH/LSF/100	8	Copper Clad Aluminium	Multi Core	No	White	100	Eca	Type 3



INTRUDER ALARM CABLE - LSZH (Low Smoke Zero Halogen)



PROFESSIONAL TINNED COPPER

- CQR Professional Copper Cable LSZH
- Low Smoke Zero Halogen
- Intruder / Alarm Cable
- 4 – 12 Core Tinned Copper
- Multi Core
- 0.182 mm² CSA Conductor
- American Wire Gauge : 25 AWG
- Available in white only
- Made in the UK



SCAN THE
QR CODE TO VIEW
THE DATA SHEET

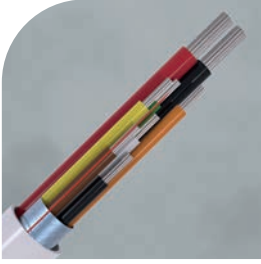
PART CODE	NO. OF CORES	CONDUCTOR TYPE	MULTI OR SOLID CORE	SCREENED (Y/N)	COLOUR	LENGTH (METERS)	EUROCLASS	BS4737 TYPE
CAB4HF/WH/100	4	Tinned Copper	Multi Core	No	White	100	Eca	Type 1
CAB4HF/WH/100/D	4	Tinned Copper	Multi Core	No	White	100	Dca	Type 1
CAB4HF/WH/500	4	Tinned Copper	Multi Core	No	White	500	Eca	Type 1
CAB4SHF/WH/100	4	Tinned Copper	Multi Core	Yes	White	100	Eca	Type 1
CAB4SHF/WH/500	4	Tinned Copper	Multi Core	Yes	White	500	Eca	Type 1
CAB6HF/WH/100	6	Tinned Copper	Multi Core	No	White	100	Eca	Type 1
CAB6HF/WH/100/D	6	Tinned Copper	Multi Core	No	White	100	Dca	Type 1
CAB6HF/WH/100/C	6	Tinned Copper	Multi Core	No	White	100	Cca	Type 1
CAB6HF/WH/500	6	Tinned Copper	Multi Core	No	White	500	Eca	Type 1
CABS6HF/WH/100	6	Tinned Copper	Multi Core	Yes	White	100	Eca	Type 1
CABS6HF/WH/100/C	6	Tinned Copper	Multi Core	Yes	White	100	Cca	Type 1
CABS6HF/WH/100/B2	6	Tinned Copper	Multi Core	Yes	White	100	B2ca	Type 1
CABS6HF/WH/500	6	Tinned Copper	Multi Core	Yes	White	500	Eca	Type 1
CAB8HF/WH/100	8	Tinned Copper	Multi Core	No	White	100	Eca	Type 1
CAB8HF/WH/200	8	Tinned Copper	Multi Core	No	White	200	Eca	Type 1
CAB8HF/WH/100/D	8	Tinned Copper	Multi Core	No	White	100	Dca	Type 1
CAB8HF/WH/500/D	8	Tinned Copper	Multi Core	No	White	500	Dca	Type 1
CAB8HF/WH/100/C	8	Tinned Copper	Multi Core	No	White	100	Cca	Type 1
CABS8HF/WH/100	8	Tinned Copper	Multi Core	Yes	White	100	Eca	Type 1
CABS8HF/WH/200	8	Tinned Copper	Multi Core	Yes	White	200	Eca	Type 1
CABS8HF/WH/100/D	8	Tinned Copper	Multi Core	Yes	White	500	Dca	Type 1
CABS8HF/WH/100/C	8	Tinned Copper	Multi Core	Yes	White	100	Cca	Type 1
CABS8HF/WH/100/B2	8	Tinned Copper	Multi Core	Yes	White	100	B2ca	Type 1
CAB12HF/WH/100	12	Tinned Copper	Multi Core	No	White	100	Eca	Type 1
CAB12HF/WH/500	12	Tinned Copper	Multi Core	No	White	500	Eca	Type 1
CAB12HF/WH/100/D	12	Tinned Copper	Multi Core	No	White	100	Dca	Type 1
CAB12HF/WH/100/C	12	Tinned Copper	Multi Core	No	White	100	Cca	Type 1

INTRUDER ALARM CABLE - Power & Data Cable



PROFESSIONAL TINNED COPPER

- CQR Professional Copper Cable: Power & Data
- PVC Sheathing & Screened
- Power & Data Cable : Separate cores
- 4 – 8 Core Tinned Copper
- Multi Core
- 0.503mm² (Power) / 0.182mm² (Data) CSA Conductor
- American Wire Gauge : 20 (Power) & 25 (Data) AWG
- Available in white only
- Made in the UK



SCAN THE
QR CODE TO VIEW
THE DATA SHEET

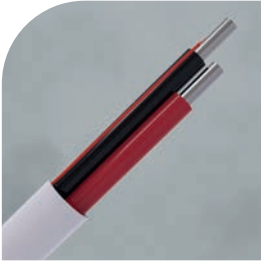
PART CODE	NO. OF CORES	CONDUCTOR TYPE	MULTI OR SOLID CORE	SHEATHING	SCREENED (Y/N)	COLOUR	LENGTH (METERS)	EUROCLASS	BS4737 TYPE
CABS4/WH/100/PD	4	Tinned Copper	Multi Core	PVC	Yes	White	100	Eca	Type 2
CABS4/WH/300/PD	4	Tinned Copper	Multi Core	PVC	Yes	White	300	Eca	Type 2
CABS6/WH/100/PD	6	Tinned Copper	Multi Core	PVC	Yes	White	100	Eca	Type 2
CABS6/WH/500/PD/PL	6	Tinned Copper	Multi Core	PVC	Yes	White	500	Eca	Type 2
CABS8/WH/100/PD	8	Tinned Copper	Multi Core	PVC	Yes	White	100	Eca	Type 2
CABS8/WH/500/PD	8	Tinned Copper	Multi Core	PVC	Yes	White	500	Eca	Type 2

INTRUDER ALARM CABLE - Solid Core



PROFESSIONAL TINNED COPPER

- CQR Professional Copper Cable:
- Solid Core
- Low Smoke Zero Halogen & Screened as Standard
- Solid Core
- 2 – 4 Core Tinned Copper
- 0.454 mm² CSA Conductor
- American Wire Gauge : 21 AWG
- Available in white & red
- Made in the UK



SCAN THE
QR CODE TO VIEW
THE DATA SHEET

PART CODE	NO. OF CORES	CONDUCTOR TYPE	MULTI OR SOLID CORE	SHEATHING	SCREENED (Y/N)	COLOUR	LENGTH (METERS)	EUROCLASS	BS4737 TYPE
CABS2HF/WH/SO/100	2	Tinned Copper	Multi Core	LSZH	Yes	White	100	Eca	Type 1
CABS2HF/WH/SO/100/C	2	Tinned Copper	Multi Core	LSZH	Yes	White	100	Cca	Type 1
CABS4HF/WH/SO/100/C	4	Tinned Copper	Multi Core	LSZH	Yes	White	100	Cca	Type 1
CABS2HF/RD/SO/100/C	2	Tinned Copper	Multi Core	LSZH	Yes	Red	100	Cca	Type 1
CABS2HF/RD/SO/100/B	2	Tinned Copper	Multi Core	LSZH	Yes	Red	100	B2ca	Type 1
CABS4HF/WH/SO/100	4	Tinned Copper	Multi Core	LSZH	Yes	White	100	Eca	Type 1
CABS4HF/WH/SO/100/D	4	Tinned Copper	Multi Core	LSZH	Yes	White	100	Dca	Type 1
CABS4HF/RD/SO/100/C	4	Tinned Copper	Multi Core	LSZH	Yes	Red	100	Cca	Type 1
CABS4HF/RD/SO/100/B	4	Tinned Copper	Multi Core	LSZH	Yes	Red	100	B2ca	Type 1



Belden Equivalent Cable

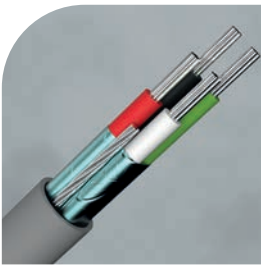
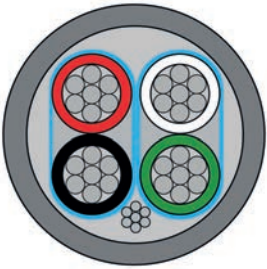


BELDEN EQUIVALENTS - 8723

8723

PROFESSIONAL TINNED COPPER

- Belden Style 8723 Cable
- 2 Pair Cable
- 4 Core Tinned Copper
- Multi Core
- 0.344 mm² CSA Conductor
- American Wire Gauge : 22 AWG
- Available in grey, white & black
- Made in the UK



SCAN THE QR CODE TO VIEW THE DATA SHEET

PART CODE	NO. OF CORES	CONDUCTOR TYPE	MULTI OR SOLID CORE	SHEATHING	SCREENED (Y/N)	COLOUR	LENGTH (METERS)	EUROCLASS	BS4737 TYPE
CABS8723HD/BK/100/F	4	Tinned Copper	Multi	HDPE	Yes	Black	100	Fca	Type 2
CABS8723HD/BK/200/F	4	Tinned Copper	Multi	HDPE	Yes	Black	200	Fca	Type 2
CABTP2X2/GY/100	4	Tinned Copper	Multi	PVC	Yes	Grey	100	Eca	Type 2
CABTP2X2/WH/100	4	Tinned Copper	Multi	PVC	Yes	White	100	Eca	Type 2
CABTP2X2/GY/LSF/100	4	Tinned Copper	Multi	LSF	Yes	Grey	100	Eca	Type 2
CABS8723HF/GY/100/D	4	Tinned Copper	Multi	LSZH	Yes	Grey	100	Dca	Type 1
CABS8723HF/GY/100/C	4	Tinned Copper	Multi	LSZH	Yes	Grey	100	Cca	Type 1
CABS8723HF/GY/100/B	4	Tinned Copper	Multi	LSZH	Yes	Grey	100	B2ca	Type 1
CABS8723HF/GY/300/B	4	Tinned Copper	Multi	LSZH	Yes	Grey	300	B2ca	Type 1

BELDEN EQUIVALENTS: 8777

8777

PROFESSIONAL TINNED COPPER

- Belden Style 8777 Cable
- 3 Pair Cable
- 6 Core Tinned Copper
- Multi Core
- 0.344 mm² CSA Conductor
- American Wire Gauge : 22 AWG
- Available in grey & black
- Made in the UK



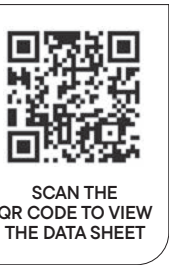
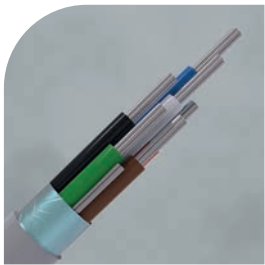
SCAN THE QR CODE TO VIEW THE DATA SHEET

PART CODE	NO. OF CORES	CONDUCTOR TYPE	MULTI OR SOLID CORE	SHEATHING	SCREENED (Y/N)	COLOUR	LENGTH (METERS)	EUROCLASS	BS4737 TYPE
CABS8777HD/BK/100/F	6	Tinned Copper	Multi	HDPE	Yes	Black	100	Fca	Type 2
CABTP3X2/IC/AB	6	Tinned Copper	Multi	PVC	Yes	Grey	100	Eca	Type 2



PROFESSIONAL TINNED COPPER

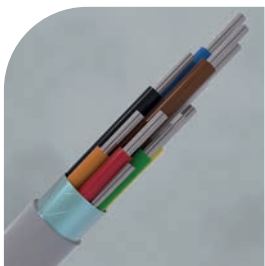
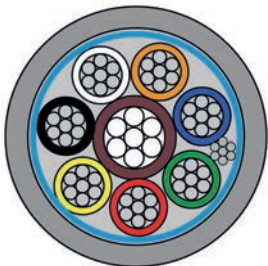
- Belden Style 9536 Cable
- 6 Multi Core
- 6 Core Tinned Copper
- Multi Core
- 0.344 mm² CSA Conductor
- American Wire Gauge : 22 AWG
- Available in grey & black
- Made in the UK



PART CODE	NO. OF CORES	CONDUCTOR TYPE	MULTI OR SOLID CORE	SHEATHING	SCREENED (Y/N)	COLOUR	LENGTH (METERS)	EUROCLASS	BS4737 TYPE
CABS9536HD/BK/100/F	6	Tinned Copper	Multi Core	HDPE	Yes	Black	100	Fca	Type 2
CABS6/GY/LSF/100	6	Tinned Copper	Multi Core	LSF	Yes	Grey	100	Eca	Type 2

PROFESSIONAL TINNED COPPER

- Belden Style 9538 Cable
- 8 Multi Core
- 8 Core Tinned Copper
- Multi Core
- 0.344 mm² CSA Conductor
- American Wire Gauge : 22 AWG
- Available in grey & black
- Made in the UK

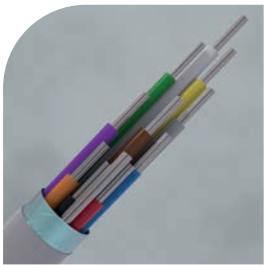
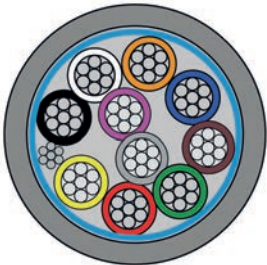


PART CODE	NO. OF CORES	CONDUCTOR TYPE	MULTI OR SOLID CORE	SHEATHING	SCREENED (Y/N)	COLOUR	LENGTH (METERS)	EUROCLASS	BS4737 TYPE
CABS9538HD/BK/100/F	8	Tinned Copper	Multi	HDPE	Yes	Black	100	Fca	Type 2
CABS8/GY/LSF/100	8	Tinned Copper	Multi	LSF	Yes	Grey	100	Eca	Type 2
CABS8/GY/LSF/300	8	Tinned Copper	Multi	LSF	Yes	Grey	300	Eca	Type 2
CABS9538HF/GY/100/D	8	Tinned Copper	Multi	LSZH	Yes	Grey	100	Dca	Type 1
CABS9538HF/GY/100/C	8	Tinned Copper	Multi	LSZH	Yes	Grey	100	Cca	Type 1
CABS9538HF/GY/100/B	8	Tinned Copper	Multi	LSZH	Yes	Grey	100	B2ca	Type 1

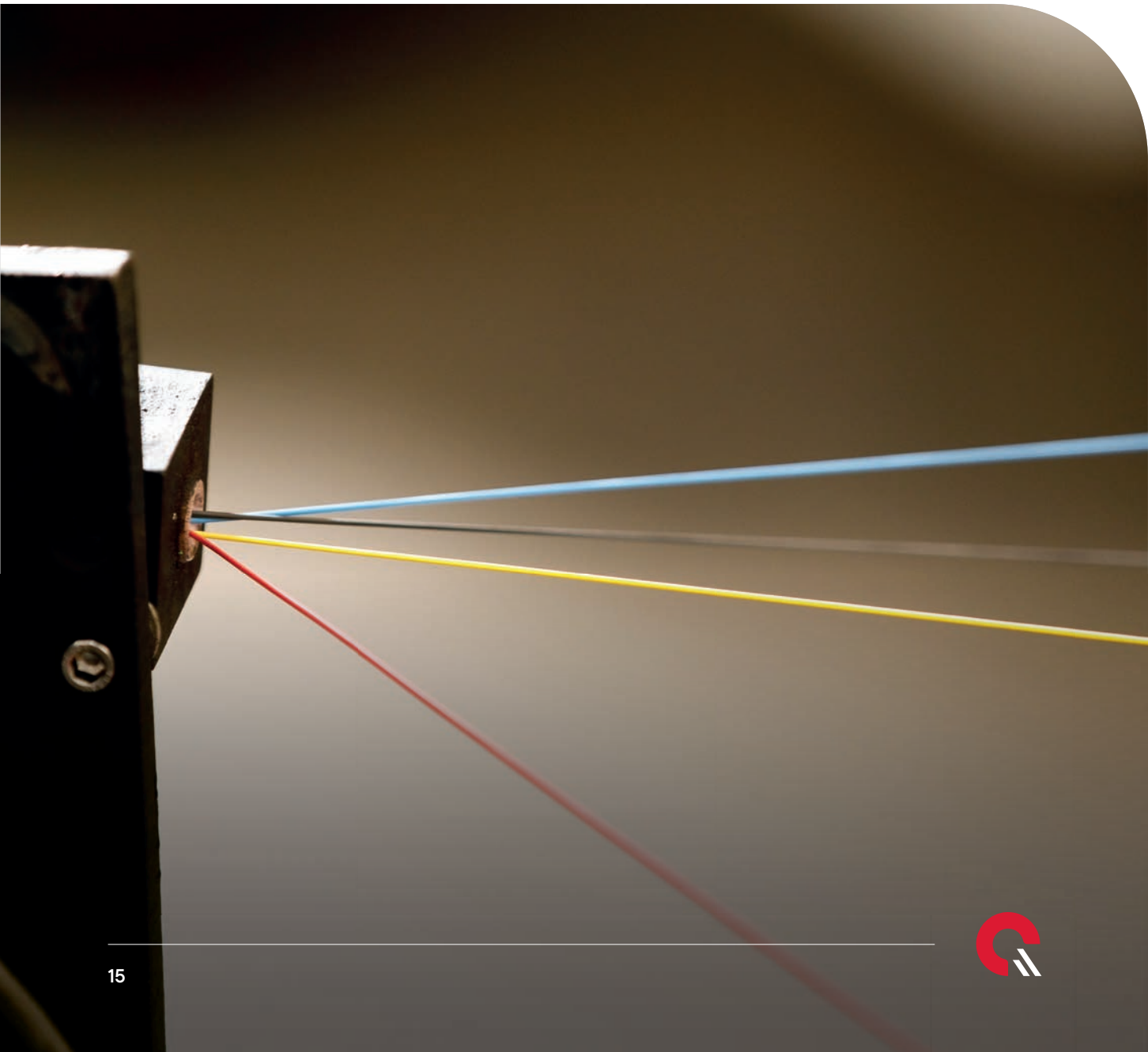


PROFESSIONAL TINNED COPPER

- Belden Style 9540 Cable
- 10 Multi Core
- 10 Core Tinned Copper
- Multi Core
- 0.344 mm² CSA Conductor
- American Wire Gauge : 22 AWG
- Available in grey & black
- Made in the UK



PART CODE	NO. OF CORES	CONDUCTOR TYPE	MULTI OR SOLID CORE	SHEATHING	SCREENED (Y/N)	COLOUR	LENGTH (METERS)	EUROCLASS	BS4737 TYPE
CABS9540HD/BK/100/F	10	Tinned Copper	Multi	HDPE	Yes	Black	100	Fca	Type 2
CABS10/GY/LSF/100	10	Tinned Copper	Multi	LSF	Yes	Grey	100	Eca	Type 2
CABS10/GY/LSF/200	10	Tinned Copper	Multi	LSF	Yes	Grey	200	Eca	Type 2
CABS9540HF/GY/100/D	10	Tinned Copper	Multi	LSZH	Yes	Grey	100	Dca	Type 2
CABS9540HF/GY/100/C	10	Tinned Copper	Multi	LSZH	Yes	Grey	100	Cca	Type 2



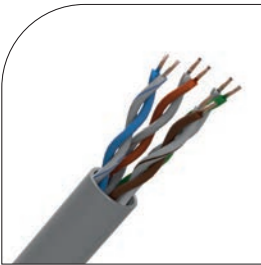
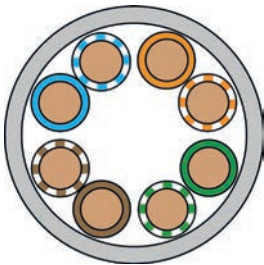


Cat5e CABLE - PVC



PLAIN COPPER

- CQR Professional Cat 5e Cable
- Unshielded Twisted 4 Pairs (UTP)
- Solid Plain Annealed Copper
- 100 Mbps transfer speed / 100 MHz frequency at a maximum distance of 90 meters
- Sheath (Tubed): PVC (Polyvinyl Chloride)
- Insulation (Filled): HDPE (High Density Polyethylene)
- Impedance: 100 $\Omega \pm 15 \Omega$
- Rated Voltage: 50V
- Nominal Resistance: <100 Ω /km
- Insulation Resistance @ 20°C: <5000 M Ω /km
- Standards: ISO 11801 / EN50575:2014 +A1:2016 Class E



SCAN THE QR CODE TO VIEW THE DATA SHEET

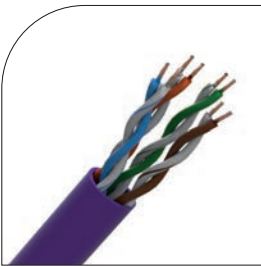
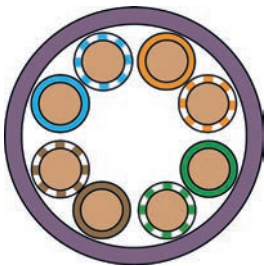
PART CODE	SHEATHING	SHIELDING TYPE	COLOUR	EUROCLASS	LENGTH	CONDUCTOR TYPE	CONDUCTOR DIAMETER (MM)	OVERALL DIAMETER (MM)
CAT5EUTP/GY/PVC/100	PVC	UTP	Grey	Eca	100 Meters	Bare Copper	0.47mm	5mm
CAT5EUTP/GY/PVC/305	PVC	UTP	Grey	Eca	305 Meters	Bare Copper	0.47mm	5mm

Cat5e CABLE - LSZH (Low Smoke Zero Halogen)



PLAIN COPPER

- CQR Professional Cat 5e Cable
- Unshielded Twisted 4 Pairs (UTP)
- Solid Plain Annealed Copper
- 100 Mbps transfer speed / 100 MHz frequency at a maximum distance of 90 meters
- Sheath (Tubed): LSZH (Low Smoke Zero Halogen)
- Insulation (Filled): HDPE (High Density Polyethylene)
- Impedance: 100 $\Omega \pm 15 \Omega$
- Rated Voltage: 50V
- Nominal Resistance: <100 Ω /km
- Insulation Resistance @ 20°C: <5000 M Ω /km
- Standards: ISO 11801 / EN50575:2014 +A1:2016 Class E



SCAN THE QR CODE TO VIEW THE DATA SHEET

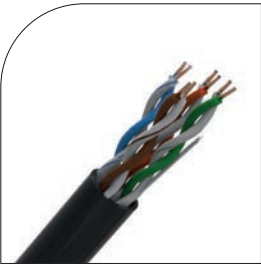
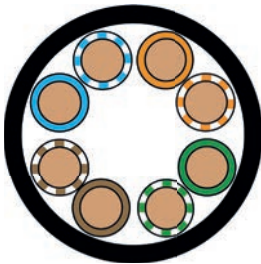
PART CODE	SHEATHING	SHIELDING TYPE	COLOUR	EUROCLASS	LENGTH	CONDUCTOR TYPE	CONDUCTOR DIAMETER (MM)	OVERALL DIAMETER (MM)
CAT5EUTP/PU/HF/305	LSZH/ Halogen Free	UTP	Purple	Eca	305 Meters	Bare Copper	0.47mm	5mm

Cat5e CABLE - PE (Polyethylene) - Duct Grade



PLAIN COPPER

- CQR Professional Cat 5e Cable
- Unshielded Twisted 4 Pairs (UTP)
- Solid Plain Annealed Copper
- 100 Mbps transfer speed / 100 MHz frequency at a maximum distance of 90 meters
- Sheath (Tubed): PE (Polyethylene)
- Duct Grade
- Insulation (Filled): HDPE (High Density Polyethylene)
- Impedance: 100 Ω ± 15 Ω
- Rated Voltage: 50V
- Nominal Resistance: <100 Ω/km
- Insulation Resistance @ 20°C: <5000 MΩ/km
- Standards: ISO 11801 / EN50575:2014 +A1:2016 Class E



SCAN THE QR CODE TO VIEW THE DATA SHEET

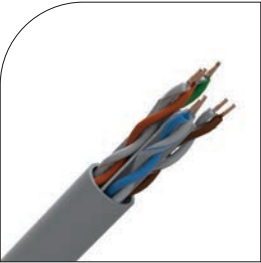
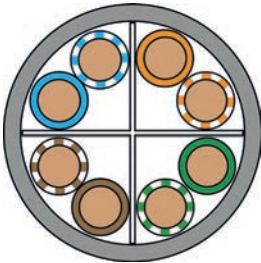
PART CODE	SHEATHING	SHIELDING TYPE	COLOUR	EUROCLASS	LENGTH	CONDUCTOR TYPE	CONDUCTOR DIAMETER (MM)	OVERALL DIAMETER (MM)
CAT5EUTP/BK/PE/305	PE	UTP	Black	Eca	305 Meters	Bare Copper	0.47mm	5mm

Cat6 CABLE - PVC



PLAIN COPPER

- CQR Professional Cat 6 Cable
- Unshielded Twisted 4 Pairs (UTP)
- Solid Plain Annealed Copper
- 1000 Mbps transfer speed / 250 MHz frequency at a maximum distance of 90 meters
- Sheath (Tubed): PVC (Polyvinyl Chloride)
- Insulation (Filled): HDPE (High Density Polyethylene)
- Impedance: 100 Ω ± 15 Ω
- Rated Voltage: 50V
- Nominal Resistance: <80 Ω/km
- Insulation Resistance @ 20°C: <5000 MΩ/km
- Standards: ISO 11801 / EN50575:2014 +A1:2016 Class E



SCAN THE QR CODE TO VIEW THE DATA SHEET

PART CODE	SHEATHING	SHIELDING TYPE	COLOUR	EUROCLASS	LENGTH	CONDUCTOR TYPE	CONDUCTOR DIAMETER (MM)	OVERALL DIAMETER (MM)
CAT6UTP/GY/PVC/305	PVC	UTP	Grey	Eca	305 Meters	Bare Copper	0.53mm	6mm

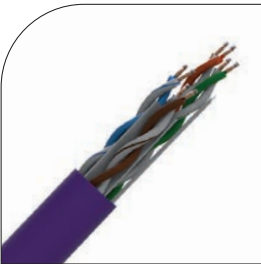
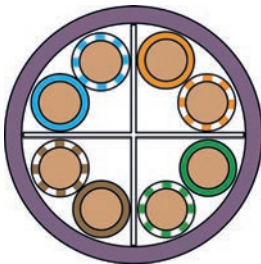


Cat6 CABLE - LSZH



PLAIN COPPER

- CQR Professional Cat 6 Cable
- Unshielded Twisted 4 Pairs (UTP)
- Solid Plain Annealed Copper
- 1000 Mbps transfer speed / 250 MHz frequency at a maximum distance of 90 meters
- Sheath (Tubed): LSZH (Low Smoke Zero Halogen)
- Insulation (Filled): HDPE (High Density Polyethylene)
- Impedance: 100 Ω ± 15 Ω
- Rated Voltage: 50V
- Nominal Resistance: <80 Ω/km
- Insulation Resistance @ 20°C: <5000 MΩ/km
- Standards: ISO 11801 / EN50575:2014 +A1:2016 Class E



SCAN THE QR CODE TO VIEW THE DATA SHEET

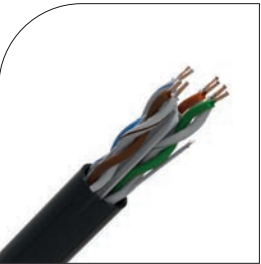
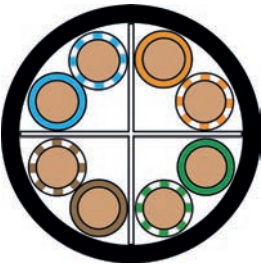
PART CODE	SHEATHING	SHIELDING TYPE	COLOUR	EUROCLASS	LENGTH	CONDUCTOR TYPE	CONDUCTOR DIAMETER (MM)	OVERALL DIAMETER (MM)
CAT6UTP/PU/HF/305	LSZH/ Halogen Free	UTP	Purple	Eca	305 Meters	Bare Copper	0.53mm	6mm

Cat6 CABLE - PE (Polyethylene) - Duct Grade



PLAIN COPPER

- CQR Professional Cat 6 Cable
- Unshielded Twisted 4 Pairs (UTP)
- Solid Plain Annealed Copper
- 1000 Mbps transfer speed / 250 MHz frequency at a maximum distance of 90 meters
- Sheath (Tubed): PE (Polyethylene) – Duct Grade
- Insulation (Filled): HDPE (High Density Polyethylene)
- Impedance: 100 Ω ± 15 Ω
- Rated Voltage: 50V
- Nominal Resistance: <80 Ω/km
- Insulation Resistance @ 20°C: <5000 MΩ/km
- Standards: ISO 11801 / EN50575:2014 +A1:2016 Class E



SCAN THE QR CODE TO VIEW THE DATA SHEET

PART CODE	SHEATHING	SHIELDING TYPE	COLOUR	EUROCLASS	LENGTH	CONDUCTOR TYPE	CONDUCTOR DIAMETER (MM)	OVERALL DIAMETER (MM)
CAT6UTP/BK/PE/305	PE	UTP	Black	Eca	305 Meters	Bare Copper	0.53mm	6mm



Cable Specifiers: Euroclass & BS4737



UNDERSTANDING CPR - Classification According to Fire Performance

Q. WHAT IS CPR?

The CPR (Construction Products Regulation) provides a harmonised set of standards for the classifying of all construction products destined for use in the European Union & United Kingdom.

Q. HOW DOES CPR RELATE TO CABLE?

A seven-class scale has been developed from Aca through to Fca to enable specifiers, installers, and authorities to understand how cables respond if they were to be exposed to fire.

Classes B1, B2, C & D is then supported by subclassifications which demonstrate how the cable reacts in relationship to smoke, flaming droplets and acidity.

The following illustration demonstrates how the classification and performance system works:

Q. HOW IS THE CABLE CLASSIFIED AND TESTED?

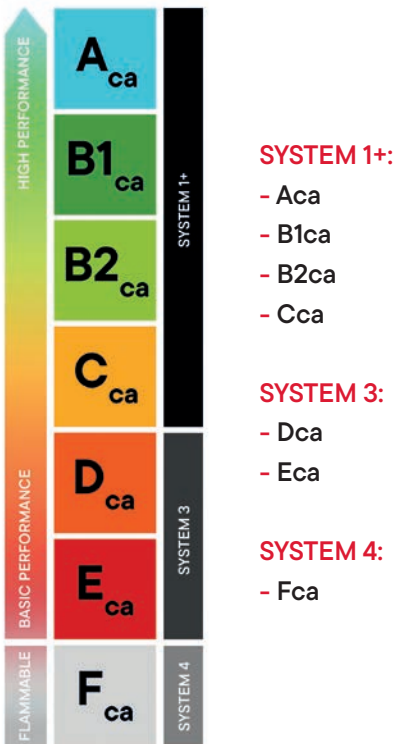
Each Euroclass classification has different levels of pre-determined testing criteria that the cable must pass.

The testing criteria is determined by the harmonised systems known as the Assessment and Verification of Constancy and Performance (AVCP) within the CPR framework.

SYSTEM 1+: Higher performance cables — Aca, B1ca, B2ca & Cca require notified body product certification.

SYSTEM 3: Basic performance cables — Dca & Eca require a notified laboratory test.

SYSTEM 4: Flammable cables — Fca can be self-certified by the manufacturer.



Reaction to Fire BS EN ISO 1716			
HIGH PERFORMANCE	SYSTEM 1+	A_{ca}	Does not contribute to the fire
		B1_{ca}	Minimum contribution to the fire
		B2_{ca}	Combustible, low flame spread & heat release contribution to the fire
BASIC PERFORMANCE	SYSTEM 3	C_{ca}	Combustible, moderate flame spread & heat release
		D_{ca}	Combustible, moderate flame spread & high levels of generated heat
		E_{ca}	Combustible, limited fire spread of less than 425mm
FLAMMABLE	SYSTEM 4	F_{ca}	Combustible, fire spread more than 425mm

Smoke Production BS EN 50399/BS EN 61034-2	Flaming Droplets BS EN 50399	Smoke Acidity BS EN 60754-2
This test is based on how clear the smoke is when released during the test:	This test measures how many droplets or particles fall from cable during the test:	This test measures how acidic the produced smoke is:
s1a: >80%	d0: No burning droplets or particles	a1: Very low acidity <2.5 µS/mm & pH >4.3
s1b: >60% to <80%	d1: Fall of droplets or particles last no longer than 10 seconds	a2: Low acidity <10 µS/mm & pH >4.3
s1: Low production of smoke produced	d2: Non of above	a3: Non of above
s2: Average smoke produced		
s3: Non of above		

Class A to E cables have to be tested by an independent authorised laboratory.



Q. WHAT ARE THE CPR SUB-CLASSIFICATIONS AND WHAT DO THEY MEAN?

The additional subclassifications are for Smoke (s), Flaming Droplets (d) & Acidity (a) and apply to B1ca to Dca.

SMOKE (s):

The Peak Smoke Production (SPR) and Total Smoke Production (TSP) are measured using the EN 50399 test for s1, s2, and s3. Additional tests for s1a and s1b smoke transmittance are measured in accordance with EN61034-2.

In the smoke test, several cables (350cm long) are mounted vertically on a ladder.

- The cables are exposed to either:
A 30kW flame for Class B1ca, or
A 20.5kW flame for Classes B2ca, Cca, Dca
- Distance: 60cm from the bottom, for 20 minutes.

CLASSIFICATION:

- If a cable achieves class s1, it is further tested to EN61034-2 Smoke Density.
- Light transmittance criteria:
s1b: $\geq 80\%$
s1a: $\geq 60\%$ and $< 80\%$

DROPLETS (d):

Flaming droplets are tested using EN 50399, with classifications d0, d1, and d2.

- d0: No flaming droplets/particles within 1200 seconds
- d1: No flaming droplets/particles persisting longer than 10 seconds within 1200 seconds
- d2: Does not meet d0 or d1 criteria

The test uses the same ladder configuration as the smoke test.

During the test, the amount and regularity of flaming droplets/particles are recorded.

The cable is then classified accordingly.

ACIDITY (a):

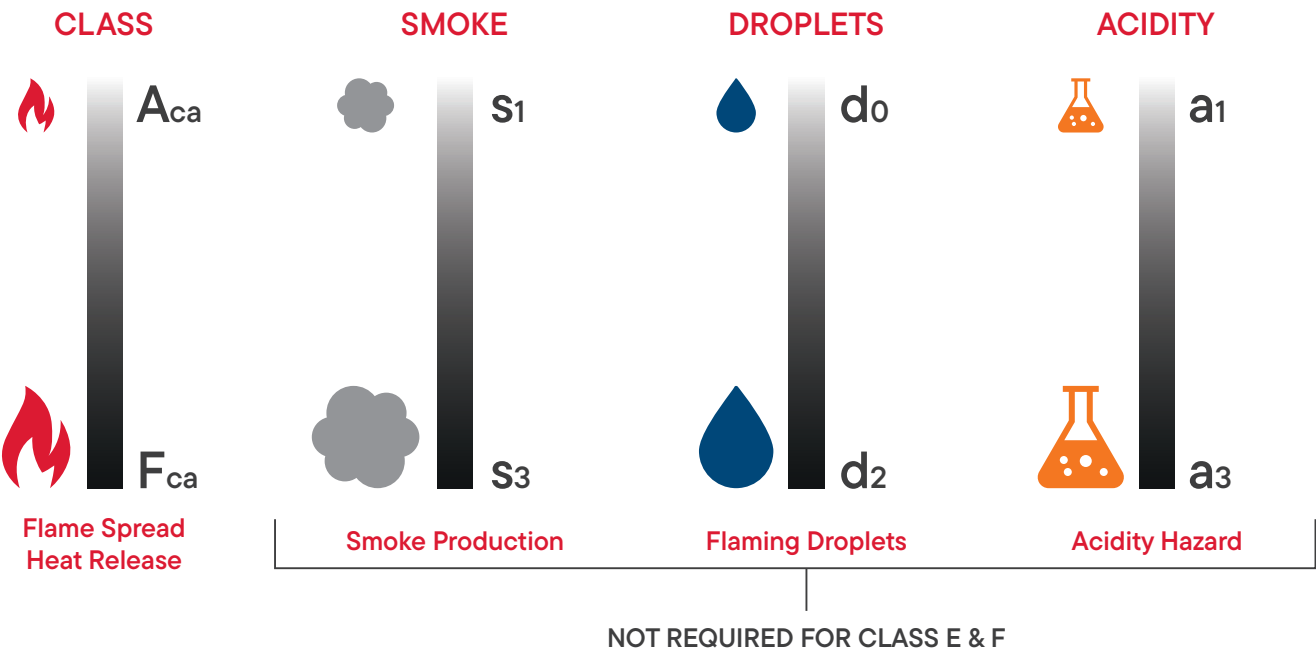
Acidity is tested using EN 60754-2, with classifications a1, a2, and a3.

- a1: Conductivity < 2.5 s/mm and pH > 4.3
- a2: Conductivity < 10 s/mm and pH > 4.3
- a3: None of the above

a1 and a2 are considered halogen-free (HF).

Test procedure:

- 1g of sheath material is burned in a combustion chamber (935–965°C) for 30 minutes.
- Fire gases are bubbled through distilled water.
- The catch solution is made up to 1 litre, and the pH and conductivity are then measured.



SYSTEM 1+: B2ca, Cca

Below is a brief description of the testing involved to achieve the correct Euroclass rating

The CPR (Construction Products Regulation) provides a harmonised set of standards for the classifying of all construction products destined for use in the European Union & United Kingdom.

- ✓ **Manufacture issues a Declaration of Performance (DoP)**
- ✓ **Certificate of Constancy of Performance (CoCP)**
- ✓ **Classification Report issued by an approved / notified body**
- ✓ **Ongoing factory production control assessment (2 per year)**
- ✓ **Tri-annual and annual testing**

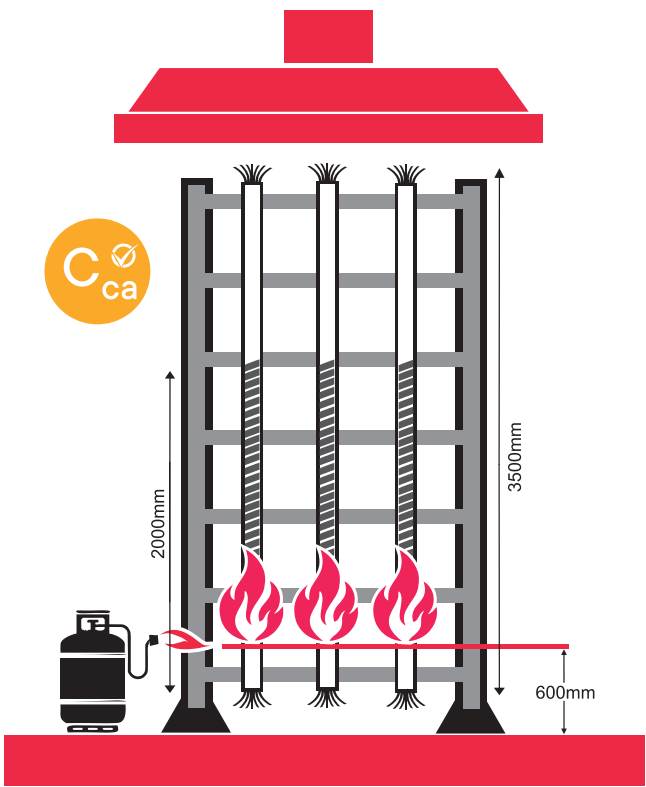
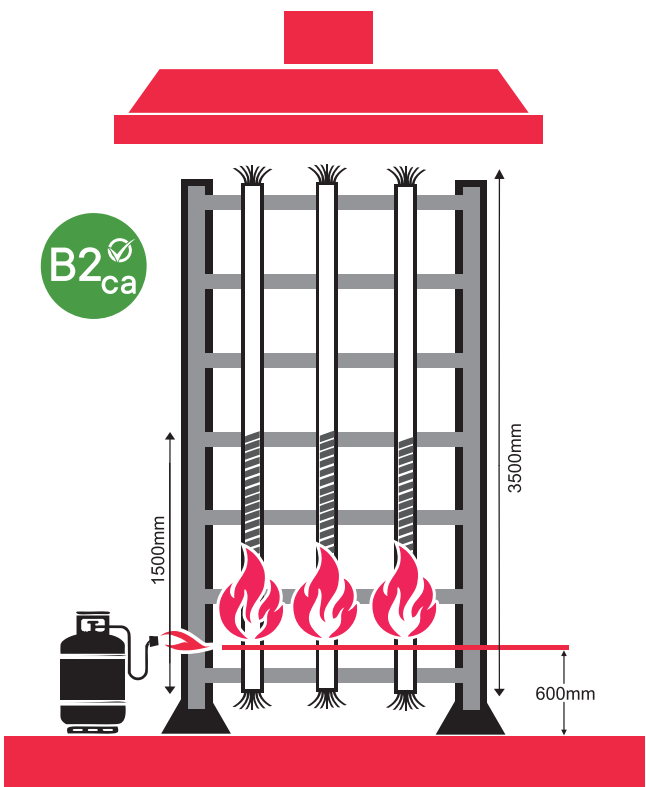
In addition to the requirements of Cca, B2ca there are optional sub-classifications for smoke, flaming droplets and acidity.

- ✓ **EN50399:**
 - B2ca cables must not exceed 1.5meters of flame spread during testing
 - Cca cables must not exceed 2 meters of flame spread during testing
- ✓ **Cca cable criteria:**
 - Peak heat release rate ≤ 60 kW
 - Fire Growth Rate Index ≤ 300 Ws⁻¹
 - Total heat release ≤ 30 MJ

- ✓ **B2ca cable additional criteria:**
 - Includes a silicate backboard and a stronger heat source
 - Peak heat release rate ≤ 30 kW
 - Fire Growth Rate Index ≤ 150 Ws⁻¹
 - Total heat release ≤ 15 MJ
- ✓ **Manufacturer requirements:**
 - 2 x Factory Process Control (FPC) audits per year
 - Annual testing of cables
 - Triennial full testing of cables

STANDARDS TESTED TO:

EN50399 (Mandatory): Heat Release & Smoke Production
EN60332-1-2 (Mandatory): Flame spread, heat & smoke
EN61034-2 (Optional): Smoke density
EN60754-2 (Optional): Acidity & Conductivity



SYSTEM 3: Dca

- ✓ Manufacturer issues Declaration of Performance (DoP).
- ✓ Notified body undertakes testing & issues classification report.
- ✓ Basic Fire Test: Vertical Flame Propagation.

Dca

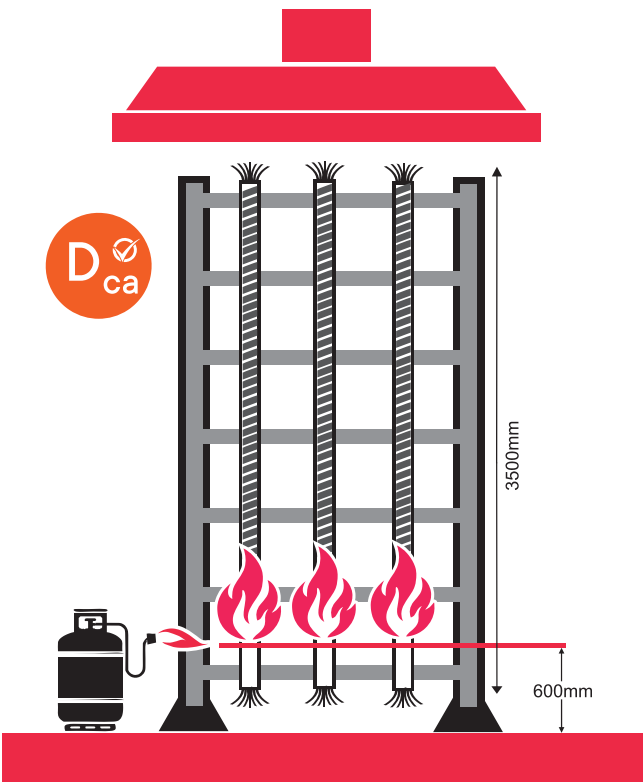
- ✓ **Dca cable criteria:**
 - Peak heat release rate ≤ 400 KW
 - Fire Growth Rate Index ≤ 300 Ws-1 (same as the other symbol)
 - Total heat release ≤ 70 MJ
- ✓ In addition to Eca testing, Dca cables are subject to:
- ✓ Dca cables and above require the inclusion of sub-classifications relating to the generation of smoke (s), flaming droplets (d), and acid gases (a) based on the results of the following:
 - Dca cables are subject to a smoke density test (EN 61034-2), which measures the smoke density of cables burning under defined conditions. The measurement is defined by the visibility of a light transmitter while the cable is under flaming combustion and smouldering conditions.
 - The smoke density test provides further insight into the level of smoke production within the S1 value and allows manufacturers to differentiate further into either an s1a or s1b smoke production classification.
 - Dca cables are also subject to an acid and conductivity test (EN 60754-2), which is designed to determine acidity by pH measurement and conductivity. It assesses the potential corrosivity of gases released during combustion, as indicated by the recorded pH value. Halogenated acid gases produce an environment harmful to both humans and sensitive equipment. This test provides insight into the acidity of the smoke, allowing manufacturers to declare the a1, a2, and a3 elements of the classification.
 - Dca cables are subject to a vertical ladder test (EN 50399), during which the cables are exposed to a 20.5 kW flame (classes B2ca, Cca, Dca). Once mounted to the ladder, the cables are placed within the test chamber, and a premixed propane and air burner flame is applied for 20 minutes.

STANDARDS TESTED TO:

EN60332-1-2: Flame spread, heat & smoke
EN61034-2: Smoke density
EN60754-2: Acidity & conductivity
EN50399: Heat release & smoke production

THE FOLLOWING RECORDINGS ARE MADE:

- Flame spread – FS, char measurement (m)
- Peak heat release – HRR (kW)
- Total heat release – THR (MJ)
- Fire growth rate index – FIGRA (Ws⁻¹)
- Peak smoke production rate – SPR (m²/s)
- Total smoke production – TSP (m²)
- Presence and frequency of flaming droplets



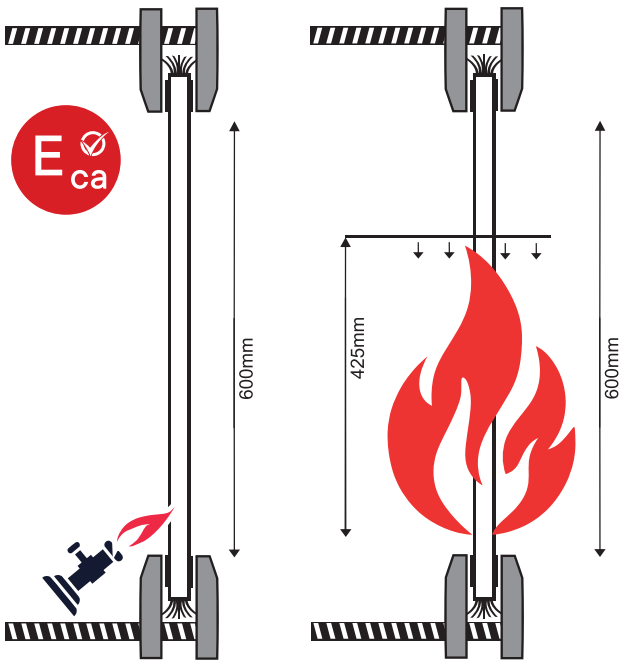
SYSTEM 3: Eca

Eca

- ✓ Manufacture issues Declaration of Performance (DoP).
- ✓ Basic Fire Test: Vertical Flame Propagation.
- ✓ A single cable is mounted vertically using two clamps, and a 1 kW flame is applied at a 45° angle to the bottom end for 60 seconds (for cables up to 24 mm in diameter).
- ✓ If, after the flame has been removed and the burning cable extinguishes itself, there is no flame spread in excess of or equal to 425 mm, it can be classified as class Eca.
- ✓ The duration the cable burns before extinguishing itself is not relevant.
- ✓ Manufacturer is required to have one-off third-party testing.

STANDARDS TESTED TO:

EN60332-1-2 (Mandatory): Flame spread, heat & smoke



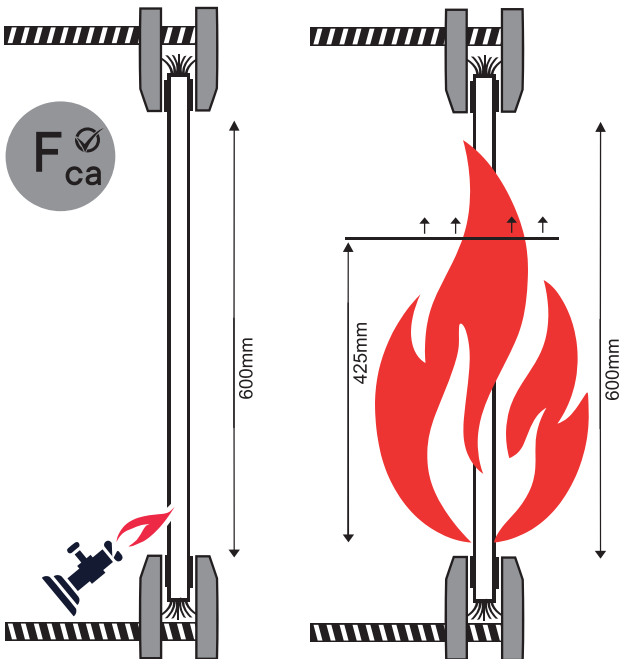
SYSTEM 4: Fca

Fca

- ✓ Manufacture issues Declaration of Performance (DoP).
- ✓ Manufacturer or approved/notified body tests the sample.
- ✓ A single cable is mounted vertically using two clamps, and a 1 kW flame is applied at a 45° angle to the bottom end for 60 seconds (for cables up to 24 mm in diameter).
- ✓ If the flame spread exceeds 425 mm from the upper mounting clamp, it is classified as Fca.
- ✓ This is the lowest recorded level for CPR. It is still suitable for use in applicable environments.

STANDARDS TESTED TO:

EN60332-1-2 (Mandatory): Flame spread, heat & smoke





B2ca
PROFESSIONAL TINNED COPPER

- System 1+ B2ca cables are third party tested for heat release, smoke production, flame spread, smoke density, acidity and conductivity.
- Flame spread must not exceed 1500mm within the test time,heat release that must not exceed <=30kW, a fire growth rate index of <=150Ws-1 and the total heat release of <=15MJ.
- In addition to Cca testing, B2ca cables have a silicate backboard with stronger heat source in testing.
- Cables manufactured to B2ca are subject to regular sample selection, inspection of plant and machinery, certificate of constancy and of performance.
- All cables are tested to: EN 50399 / EN 60332-1-2 / EN61034-2 / EN 60754-2

MULTI CORE CABLES:

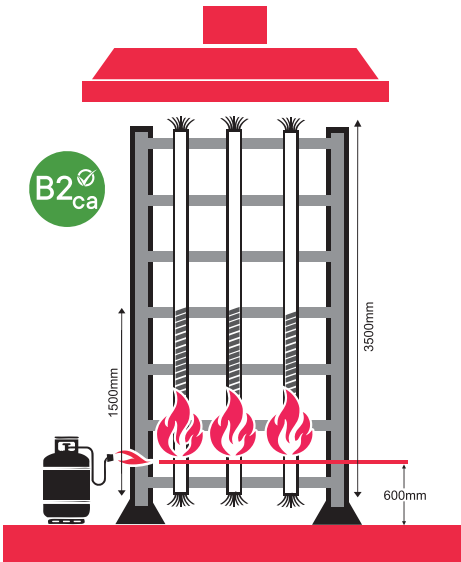
PART CODE	NO. OF CORES	CONDUCTOR TYPE	MULTI OR SOLID CORE	SHEATHING	SCREENED (Y/N)	COLOUR	LENGTH (METERS)	EUROCLASS	BS4737 TYPE
CABS6HF/WH/100/B2	6	Tinned Copper	Multi Core	LSZH	Yes	White	100	B2ca	Type 1
CABS8HF/WH/100/B2	8	Tinned Copper	Multi Core	LSZH	Yes	White	100	B2ca	Type 1

SOLID CORE CABLES:

PART CODE	NO. OF CORES	CONDUCTOR TYPE	MULTI OR SOLID CORE	SHEATHING	SCREENED (Y/N)	COLOUR	LENGTH (METERS)	EUROCLASS	BS4737 TYPE
CABS2HF/RD/SO/100/B	2	Tinned Copper	Solid Core	LSZH	Yes	Red	100	B2ca	Type 1
CABS4HF/RD/SO/100/B	4	Tinned Copper	Solid Core	LSZH	Yes	Red	100	B2ca	Type 1

BELDEN EQUIVALENT CABLES:

PART CODE	NO. OF CORES	CONDUCTOR TYPE	MULTI OR SOLID CORE	SHEATHING	SCREENED (Y/N)	COLOUR	LENGTH (METERS)	EUROCLASS	BS4737 TYPE
CABS8723HF/GY/100/B	4	Tinned Copper	Multi	LSZH	Yes	Grey	100	B2ca	Type 1
CABS8723HF/GY/300/B	4	Tinned Copper	Multi	LSZH	Yes	Grey	300	B2ca	Type 1
CABS9538HF/GY/100/B	8	Tinned Copper	Multi	LSZH	Yes	Grey	100	B2ca	Type 1



Cca
PROFESSIONAL TINNED COPPER

- System 1+ Cca cables are third party tested for heat release, smoke production, flame spread, smoke density, acidity and conductivity.
- Flame spread must not exceed 2 meters of flame spread within the test time,heat release that must not exceed <=60kW, a fire growth rate index of <=300Ws-1 and the total heat release of <=30MJ.
- Cables manufactured to Cca are subject to regular sample selection, inspection of plant and machinery, certificate of constancy and of performance.
- All cables are tested to: EN 50399 / EN 60332-1-2 / EN61034-2 / EN 60754-2.

MULTI CORE CABLES:

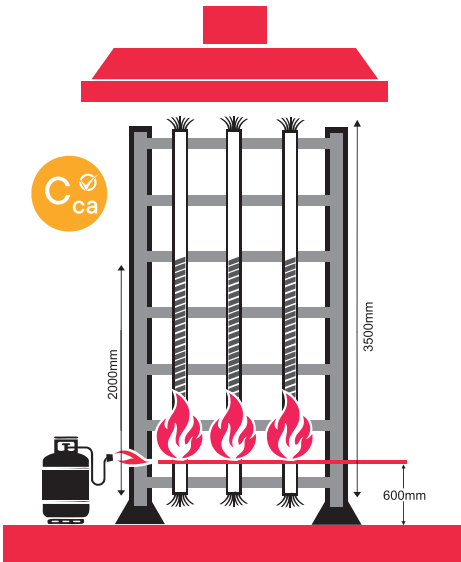
PART CODE	NO. OF CORES	CONDUCTOR TYPE	MULTI OR SOLID CORE	SHEATHING	SCREENED (Y/N)	COLOUR	LENGTH (METERS)	EUROCLASS	BS4737 TYPE
CAB6HF/WH/100/C	6	Tinned Copper	Multi Core	LSZH	No	White	100	Cca	Type 1
CABS6HF/WH/100/C	6	Tinned Copper	Multi Core	LSZH	Yes	White	100	Cca	Type 1
CAB8HF/WH/100/C	8	Tinned Copper	Multi Core	LSZH	No	White	100	Cca	Type 1
CABS8HF/WH/100/C	8	Tinned Copper	Multi Core	LSZH	Yes	White	100	Cca	Type 1
CAB12HF/WH/100/C	12	Tinned Copper	Multi Core	LSZH	No	White	100	Cca	Type 1

SOLID CORE CABLES:

PART CODE	NO. OF CORES	CONDUCTOR TYPE	MULTI OR SOLID CORE	SHEATHING	SCREENED (Y/N)	COLOUR	LENGTH (METERS)	EUROCLASS	BS4737 TYPE
CABS2HF/WH/SO/100/C	2	Tinned Copper	Solid Core	LSZH	Yes	White	100	Cca	Type 1
CABSHF/RD/SO/100/C	2	Tinned Copper	Solid Core	LSZH	Yes	Red	100	Cca	Type 1

BELDEN EQUIVALENT CABLES:

PART CODE	NO. OF CORES	CONDUCTOR TYPE	MULTI OR SOLID CORE	SHEATHING	SCREENED (Y/N)	COLOUR	LENGTH (METERS)	EUROCLASS	BS4737 TYPE
CABS8723HF/GY/100/C	4	Tinned Copper	Multi Core	LSZH	Yes	Grey	100	Cca	Type 1
CABS9538HF/GY/100/C	8	Tinned Copper	Multi Core	LSZH	Yes	Grey	100	Cca	Type 1
CABS9540HF/GY/100/C	10	Tinned Copper	Multi Core	LSZH	Yes	Grey	100	Cca	Type 2





Dca
PROFESSIONAL TINNED COPPER

- System 3 Dca cables are third party tested for heat release, smoke production, flame spread, smoke density, acidity and conductivity.
- Dca cables and above require the inclusion of sub-classifications relating to the generation of smoke (s), flaming droplets (d) and acid gases (a) based on the results of the following:
The cables are subject to a smoke density test (EN 61034-2) which measures the smoke density of cables burning under defined conditions. The measurement of smoke density is defined by the visibility of a light transmitter while the cable is under flaming combustion and smouldering conditions.
The smoke density test provides further insight into the level of smoke production within the S1 value and allows us a manufacturer to differentiate further to either a s1a or s1b smoke production classification.
Dca cables are also subject to an acid and conductivity test (EN 60754-2) which is designed to determine acidity by pH measurement and conductivity and assesses the potential corrosivity of gases released during the combustion of materials, which is indicated in the pH value recorded. Halogenated acid

- gases produce an environment which is harmful to both humans and sensitive equipment. The test provides insight into the acidity of the smoke producing allowing manufacturers to declare the a1, a2 and a3 element of the classification.
- Dca cables are subject to a vertical ladder test (EN 50399) during which the cables are exposed to a 20.5kW flame (classes B2ca, Cca, Dca). Once the cables are mounted to the ladder, they are placed within the test chamber and a premixed propane and air burner flame is applied for 20 minutes.
 - The following recordings are made:
 - Flame spread - FS, char measurement - (m)
 - Peak heat release - HRR (kW)
 - Total heat release - THJ (MJ)
 - Fire growth rate index - FIGRA (Ws-1)
 - Peak smoke production rate - SPR (m2 s-1)
 - Total smoke production - TSP(m2)
 - Presence of and frequency of flaming droplets
 - All cables are tested to: EN60332-1-2 / EN61034-S / EN60754-S & EN 50399.

MULTI CORE CABLES:

PART CODE	NO. OF CORES	CONDUCTOR TYPE	MULTI OR SOLID CORE	SHEATHING	SCREENED (Y/N)	COLOUR	LENGTH (METERS)	EUROCLASS	BS4737 TYPE
CAB4HF/WH/100/D	4	Tinned Copper	Multi Core	LSZH	No	White	100	Dca	Type 1
CAB6HF/WH/100/D	6	Tinned Copper	Multi Core	LSZH	No	White	100	Dca	Type 1
CAB8HF/WH/100/D	8	Tinned Copper	Multi Core	LSZH	No	White	100	Dca	Type 1
CAB8HF/WH/500/D	8	Tinned Copper	Multi Core	LSZH	No	White	500	Dca	Type 1
CABS8HF/WH/100D	8	Tinned Copper	Multi Core	LSZH	Yes	White	500	Dca	Type 1
CAB12HF/WH/100D	12	Tinned Copper	Multi Core	LSZH	No	White	100	Dca	Type 1

SOLID CORE CABLES:

PART CODE	NO. OF CORES	CONDUCTOR TYPE	MULTI OR SOLID CORE	SHEATHING	SCREENED (Y/N)	COLOUR	LENGTH (METERS)	EUROCLASS	BS4737 TYPE
CABS4HF/WH/SO/100/D	4	Tinned Copper	Solid Core	LSZH	Yes	White	100	Dca	Type 1

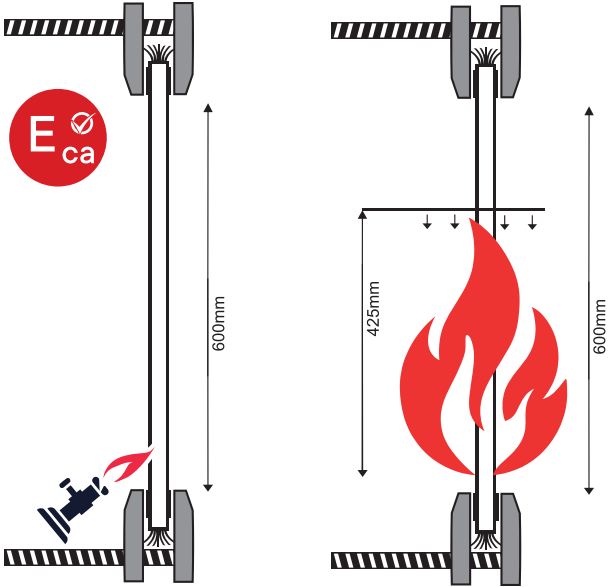
BELDEN EQUIVALENT CABLES:

PART CODE	NO. OF CORES	CONDUCTOR TYPE	MULTI OR SOLID CORE	SHEATHING	SCREENED (Y/N)	COLOUR	LENGTH (METERS)	EUROCLASS	BS4737 TYPE
CABS8723HF/GY/100/D	4	Tinned Copper	Multi	LSZH	Yes	Grey	100	Dca	Type 1
CABS9538HF/GY/100/D	8	Tinned Copper	Multi	LSZH	Yes	Grey	100	Dca	Type 1
CABS9540HF/GY/100/D	10	Tinned Copper	Multi	LSZH	Yes	Grey	100	Dca	Type 2



Eca
PROFESSIONAL TINNED COPPER

- System 3 Eca cables are subject to a basic fire testing, vertical flame propagation
- The cable is third party tested for heat spread, where a single cable is mounted vertically using two clamps & 1 kW flame is applied at 45° to the bottom end for 60 seconds for cables up to 24mm in diameter.
- If after the flame has been removed and after the burning cable extinguishes itself there is no flame spread in excess or equal to 425mm, it can be classified to Eca class.
- The length of time it takes for how long the cable burns for before extinguishing itself is not relevant.
- All cables are tested to: EN 60332-1-2 (Mandatory): Flame spread, heat & smoke



MULTI CORE CABLES:

PART CODE	NO. OF CORES	CONDUCTOR TYPE	MULTI OR SOLID CORE	SHEATHING	SCREENED (Y/N)	COLOUR	LENGTH (METERS)	EUROCLASS	BS4737 TYPE
CAB4/WH/100M	4	Tinned Copper	Multi Core	PVC	No	White	100	Eca	Type 2
CAB4/BR/100M	4	Tinned Copper	Multi Core	PVC	No	Brown	100	Eca	Type 2
CABS4/WH/100M	4	Tinned Copper	Multi Core	PVC	Yes	White	100	Eca	Type 2
CABS4/WH/200M	4	Tinned Copper	Multi Core	PVC	Yes	White	200	Eca	Type 2
CAB6/WH/100M	6	Tinned Copper	Multi Core	PVC	No	White	100	Eca	Type 2
CAB6/WH/200M	6	Tinned Copper	Multi Core	PVC	No	White	200	Eca	Type 2
CAB6/WH/300M	6	Tinned Copper	Multi Core	PVC	No	White	300	Eca	Type 2
CAB6/WH/500M	6	Tinned Copper	Multi Core	PVC	No	White	500	Eca	Type 2
CAB6/BR/100M	6	Tinned Copper	Multi Core	PVC	No	Brown	100	Eca	Type 2
CABS6/WH/100M	6	Tinned Copper	Multi Core	PVC	Yes	White	100	Eca	Type 2
CABS6/WH/200M	6	Tinned Copper	Multi Core	PVC	Yes	White	200	Eca	Type 2
CABS6/WH/500M	6	Tinned Copper	Multi Core	PVC	Yes	White	500	Eca	Type 2
CAB8/WH/100M	8	Tinned Copper	Multi Core	PVC	No	White	100	Eca	Type 2
CAB8/WH/200M	8	Tinned Copper	Multi Core	PVC	No	White	200	Eca	Type 2
CAB8/WH/300M	8	Tinned Copper	Multi Core	PVC	No	White	300	Eca	Type 2
CAB8/WH/500M	8	Tinned Copper	Multi Core	PVC	No	White	500	Eca	Type 2
CAB8/BR/100M	8	Tinned Copper	Multi Core	PVC	No	Brown	100	Eca	Type 2
CABS8/WH/100M	8	Tinned Copper	Multi Core	PVC	Yes	White	100	Eca	Type 2
CABS8/WH/200M	8	Tinned Copper	Multi Core	PVC	Yes	White	200	Eca	Type 2
CABS8/WH/500M	8	Tinned Copper	Multi Core	PVC	Yes	White	500	Eca	Type 2
CAB12/WH/100M	12	Tinned Copper	Multi Core	PVC	No	White	100	Eca	Type 2
CAB12/WH/200M	12	Tinned Copper	Multi Core	PVC	No	White	200	Eca	Type 2
CAB12/WH/300M	12	Tinned Copper	Multi Core	PVC	No	White	300	Eca	Type 2
CABS12/WH/100M	12	Tinned Copper	Multi Core	PVC	Yes	White	100	Eca	Type 2
CABS12/WH/500M	12	Tinned Copper	Multi Core	PVC	Yes	White	500	Eca	Type 2





MULTI CORE CABLES (CONTINUED):

PART CODE	NO. OF CORES	CONDUCTOR TYPE	MULTI OR SOLID CORE	SHEATHING	SCREENED (Y/N)	COLOUR	LENGTH (METERS)	EUROCLASS	BS4737 TYPE
CAB6/WH/LSF/100	6	Tinned Copper	Multi Core	LSF	No	White	100	Eca	Type 2
CAB8/WH/LSF/100	8	Tinned Copper	Multi Core	LSF	No	White	100	Eca	Type 2
CAB8/WH/LSF/200	8	Tinned Copper	Multi Core	LSF	No	White	200	Eca	Type 2
CAB8/WH/LSF/500	8	Tinned Copper	Multi Core	LSF	No	White	500	Eca	Type 2
CABS8/WH/LSF/100	8	Tinned Copper	Multi Core	LSF	Yes	White	100	Eca	Type 2
CABS8/WH/LSF/200	8	Tinned Copper	Multi Core	LSF	Yes	White	200	Eca	Type 2
CAB4HF/WH/100	4	Tinned Copper	Multi Core	LSZH	No	White	100	Eca	Type 1
CAB4HF/WH/500	4	Tinned Copper	Multi Core	LSZH	No	White	500	Eca	Type 1
CAB4SHF/WH/100	4	Tinned Copper	Multi Core	LSZH	Yes	White	100	Eca	Type 1
CAB4SHF/WH/500	4	Tinned Copper	Multi Core	LSZH	Yes	White	500	Eca	Type 1
CAB6HF/WH/100	6	Tinned Copper	Multi Core	LSZH	No	White	100	Eca	Type 1
CAB6HF/WH/500	6	Tinned Copper	Multi Core	LSZH	No	White	500	Eca	Type 1
CABS6HF/WH/100	6	Tinned Copper	Multi Core	LSZH	Yes	White	100	Eca	Type 1
CABS6HF/WH/500	6	Tinned Copper	Multi Core	LSZH	Yes	White	500	Eca	Type 1
CAB8HF/WH/100	8	Tinned Copper	Multi Core	LSZH	No	White	100	Eca	Type 1
CAB8HF/WH/200	8	Tinned Copper	Multi Core	LSZH	No	White	200	Eca	Type 1
CABS8HF/WH/100	8	Tinned Copper	Multi Core	LSZH	Yes	White	100	Eca	Type 1
CABS8HF/WH/200	8	Tinned Copper	Multi Core	LSZH	Yes	White	200	Eca	Type 1
CAB12HF/WH/100	12	Tinned Copper	Multi Core	LSZH	No	White	100	Eca	Type 1
CAB12HF/WH/500	12	Tinned Copper	Multi Core	LSZH	No	White	500	Eca	Type 1

COPPER CLAD ALUMINIUM (CCA):

PART CODE	NO. OF CORES	CONDUCTOR TYPE	MULTI OR SOLID CORE	SHEATHING	SCREENED (Y/N)	COLOUR	LENGTH (METERS)	EUROCLASS	BS4737 TYPE
CABCCA6/WH/100M	6	Copper Clad Aluminium	Multi Core	PVC	No	White	100	Eca	Type 3
CABCCA8/WH/100M	8	Copper Clad Aluminium	Multi Core	PVC	No	White	100	Eca	Type 3
CABCCAS8/WH/100M	8	Copper Clad Aluminium	Multi Core	PVC	Yes	White	100	Eca	Type 3

POWER & DATA CABLES:

PART CODE	NO. OF CORES	CONDUCTOR TYPE	MULTI OR SOLID CORE	SHEATHING	SCREENED (Y/N)	COLOUR	LENGTH (METERS)	EUROCLASS	BS4737 TYPE
CABS4/WH/100/PD	4	Tinned Copper	Multi Core	PVC	Yes	White	100	Eca	Type 2
CABS4/WH/300/PD	4	Tinned Copper	Multi Core	PVC	Yes	White	300	Eca	Type 2
CABS6/WH/100/PD	6	Tinned Copper	Multi Core	PVC	Yes	White	100	Eca	Type 2
CABS6/WH/500/PD/PL	6	Tinned Copper	Multi Core	PVC	Yes	White	500	Eca	Type 2
CABS8/WH/100/PD	8	Tinned Copper	Multi Core	PVC	Yes	White	100	Eca	Type 2
CABS8/WH/500/PD	8	Tinned Copper	Multi Core	PVC	Yes	White	500	Eca	Type 2



SOLID CORE CABLES:

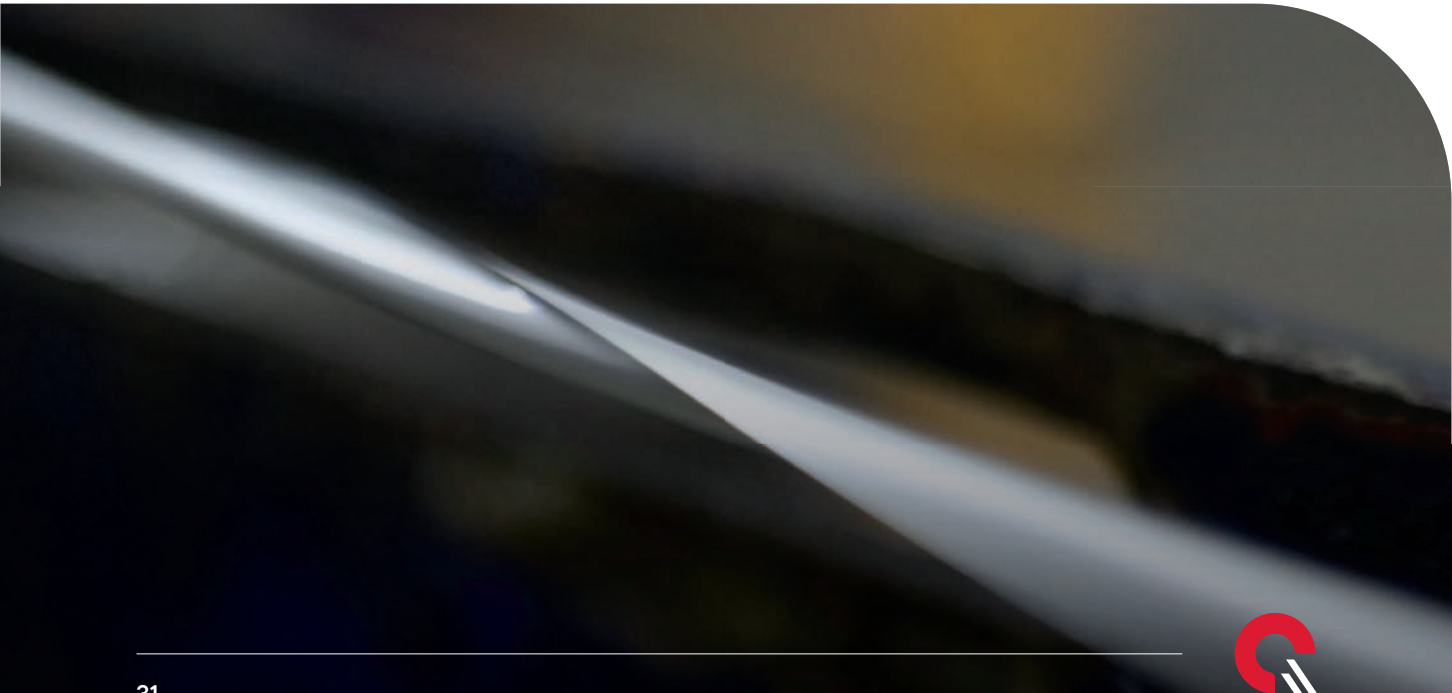
PART CODE	NO. OF CORES	CONDUCTOR TYPE	MULTI OR SOLID CORE	SHEATHING	SCREENED (Y/N)	COLOUR	LENGTH (METERS)	EUROCLASS	BS4737 TYPE
CABS2HF/WH/SO/100	2	Tinned Copper	Solid Core	LSZH	Yes	White	100	Eca	Type 1
CABS4HF/WH/SO/100	4	Tinned Copper	Solid Core	LSZH	Yes	White	100	Eca	Type 1

BELDEN EQUIVALENT CABLES:

PART CODE	NO. OF CORES	CONDUCTOR TYPE	MULTI OR SOLID CORE	SHEATHING	SCREENED (Y/N)	COLOUR	LENGTH (METERS)	EUROCLASS	BS4737 TYPE
CABTP2X2/GY/100	4	Tinned Copper	Multi	PVC	Yes	Grey	100	Eca	Type 2
CABTP2X2/WH/100	4	Tinned Copper	Multi	PVC	Yes	White	100	Eca	Type 2
CABTP2X2/GY/LSF/100	4	Tinned Copper	Multi	LSF	Yes	Grey	100	Eca	Type 2
CABTP3X2/1C/AB	6	Tinned Copper	Multi	PVC	Yes	Grey	100	Eca	Type 2
CABS8/GY/LSF/100	8	Tinned Copper	Multi	LSF	Yes	Grey	100	Eca	Type 2
CABS8/GY/LSF/300	8	Tinned Copper	Multi	LSF	Yes	Grey	300	Eca	Type 2
CABS10/GY/LSF/100	10	Tinned Copper	Multi	LSF	Yes	Grey	100	Eca	Type 2
CABS10/GY/LSF/200	10	Tinned Copper	Multi	LSF	Yes	Grey	200	Eca	Type 2

CATEGORY CABLES:

PART CODE	SHEATHING	SHIELDING TYPE	COLOUR	EUROCLASS	LENGTH	CONDUCTOR TYPE	CONDUCTOR DIAMETER (MM)	OVERALL DIAMETER (MM)
CAT5EUTP/GY/PVC/100	PVC	UTP	Grey	Eca	100 Meters	Bare Copper	0.47mm	TBC
CAT5EUTP/GY/PVC/305	PVC	UTP	Grey	Eca	305 Meters	Bare Copper	0.47mm	TBC
CAT5EUTP/GY/PVC/100	LSZH/ Halogen Free	UTP	Purple	Eca	305 Meters	Bare Copper	0.47mm	TBC
CAT5EUTP/GY/PVC/305	PVC	UTP	Grey	Eca	305 Meters	Bare Copper	0.53mm	TBC
CAT5EUTP/GY/PVC/305	LSZH/ Halogen Free	UTP	Purple	Eca	305 Meters	Bare Copper	0.53mm	TBC





Fca
BELDEN EQUIVALENT CABLES:

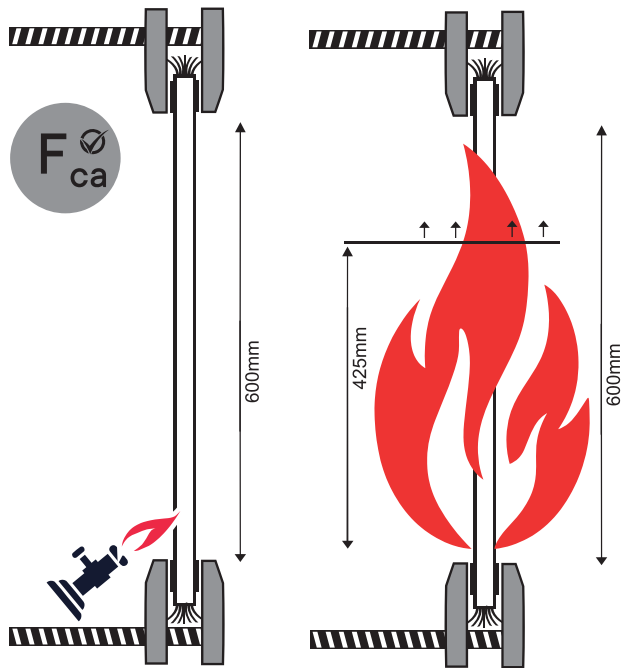
- System 4 Fca cables are subject to self certification by the manufacturer and are typically found on PE duct grade cables.
- The cable is testing by the manufacturer for heat spread, where a single cable is mounted vertically using two clamps & 1 kW flame is applied at 45° to the bottom end for 60 seconds for cables upto 24mm in diameter.
- If the flame spread is in excess of 425mm of the upper mounting clamp it is classified to Fca
- This is the lowest recorded level for CPR. It is still suitable for use in applicable environments
- All cables are tested to : EN 60332-1-2 (Mandatory): Flame spread, heat & smoke

MULTI CORE CABLES:

PART CODE	NO. OF CORES	CONDUCTOR TYPE	MULTI OR SOLID CORE	SHEATHING	SCREENED (Y/N)	COLOUR	LENGTH (METERS)	EUROCLASS	BS4737 TYPE
CABS8723HD/BK/100/F	4	Tinned Copper	Multi Core	HDPE	Yes	Black	100	Fca	Type 2
CABS8723HD/BK/200/F	4	Tinned Copper	Multi Core	HDPE	Yes	Black	200	Fca	Type 2
CABS8777HD/BK/100/F	6	Tinned Copper	Multi Core	HDPE	Yes	Black	100	Fca	Type 2
CABS9538HD/BK/100/F	8	Tinned Copper	Multi Core	HDPE	Yes	Black	100	Fca	Type 2
CABS9540HD/BK/100/F	10	Tinned Copper	Multi Core	HDPE	Yes	Black	100	Fca	Type 2

CATEGORY CABLES:

PART CODE	SHEATHING	SHIELDING TYPE	COLOUR	EUROCLASS	LENGTH	CONDUCTOR TYPE	CONDUCTOR DIAMETER (MM)	OVERALL DIAMETER (MM)
CAT5EUTP/BK/PE/305	PE	UTP	Black	Eca	305 Meters	Bare Copper	0.47mm	TBC
CAT6UTP/BK/PE/305	PE	UTP	Black	Eca	305 Meters	Bare Copper	0.53mm	TBC



UNDERSTANDING BS4737-3.30:2015

WHY DO WE HAVE BS4737-3.30:2015?

It was reintroduced in 2015 due to an influx of poor-quality cables being sold in the UK market, causing systems to malfunction. The standard provides for three classifications of cable construction with a clear stipulation of testing requirements and guidance on the application of cables for fitting.

The standard stipulates the maximum resistance per type and the insulation and sheathing materials used for each cable. Cable construction is set out as per the table below, with the ripcord colours easily identifying the type of cable.



GREEN RIPCORD



RED RIPCORD



YELLOW RIPCORD

BS4737 CABLE TYPES

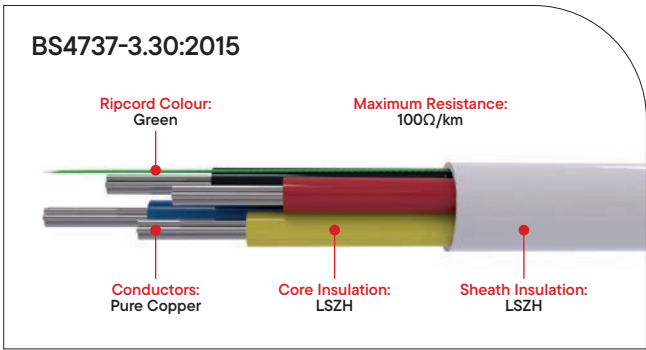
	Conductors	Ripcord Colour	Core Insulation	Sheath Insulation	Maximum Resistance
BS4737-3.30:2015 TYPE 1	Pure Copper	Green	LSZH	LSZH	100 Ω/km
BS4737-3.30:2015 TYPE 2	Pure Copper	Red	PVC	PVC/LSF	100 Ω/km
BS4737-3.30:2015 TYPE 3	Copper Clad Aluminium	Yellow	PVC	PVC/LSF	155 Ω/km





TYPE 1
PROFESSIONAL TINNED COPPER

- Type 1: BS4737-3.30:2015 Cables
- Conductor: Professional Tinned Copper
- Rip Cord Colour: Green
- Core Insulation: Low Smoke Zero Halogen (LSZH)
- Sheathing Insulation: Low Smoke Zero Halogen (LSZH)
- Maximum Resistance: 100Ω/km



MULTI CORE CABLES:

PART CODE	NO. OF CORES	CONDUCTOR TYPE	MULTI OR SOLID CORE	SHEATHING	SCREENED (Y/N)	COLOUR	LENGTH (METERS)	EUROCLASS	BS4737 TYPE
CAB4HF/WH/100	4	Tinned Copper	Multi Core	LSZH	No	White	100	Eca	Type 1
CAB4HF/WH/100/D	4	Tinned Copper	Multi Core	LSZH	No	White	100	Dca	Type 1
CAB4HF/WH/500	4	Tinned Copper	Multi Core	LSZH	No	White	500	Eca	Type 1
CAB4SHF/WH/100	4	Tinned Copper	Multi Core	LSZH	Yes	White	100	Eca	Type 1
CAB4SHF/WH/500	4	Tinned Copper	Multi Core	LSZH	Yes	White	500	Eca	Type 1
CAB6HF/WH/100	6	Tinned Copper	Multi Core	LSZH	No	White	100	Eca	Type 1
CAB6HF/WH/100/D	6	Tinned Copper	Multi Core	LSZH	No	White	100	Dca	Type 1
CAB6HF/WH/500	6	Tinned Copper	Multi Core	LSZH	No	White	500	Eca	Type 1
CABS6HF/WH/100	6	Tinned Copper	Multi Core	LSZH	Yes	White	100	Eca	Type 1
CABS6HF/WH/100/B2	6	Tinned Copper	Multi Core	LSZH	Yes	White	100	B2ca	Type 1
CABS6HF/WH/500	6	Tinned Copper	Multi Core	LSZH	Yes	White	500	Eca	Type 1
CAB8HF/WH/100	8	Tinned Copper	Multi Core	LSZH	No	White	100	Eca	Type 1
CAB8HF/WH/200	8	Tinned Copper	Multi Core	LSZH	No	White	200	Eca	Type 1
CAB8HF/WH/100/D	8	Tinned Copper	Multi Core	LSZH	No	White	100	Dca	Type 1
CAB8HF/WH/500/D	8	Tinned Copper	Multi Core	LSZH	No	White	500	Dca	Type 1
CABS8HF/WH/100	8	Tinned Copper	Multi Core	LSZH	Yes	White	100	Eca	Type 1
CABS8HF/WH/200	8	Tinned Copper	Multi Core	LSZH	Yes	White	200	Eca	Type 1
CABS8HF/WH/100D	8	Tinned Copper	Multi Core	LSZH	Yes	White	500	Dca	Type 1
CABS8HF/WH/100/B2	8	Tinned Copper	Multi Core	LSZH	Yes	White	100	B2ca	Type 1
CAB12HF/WH/100	12	Tinned Copper	Multi Core	LSZH	No	White	100	Eca	Type 1
CAB12HF/WH/500	12	Tinned Copper	Multi Core	LSZH	No	White	500	Eca	Type 1
CAB12HF/WH/100D	12	Tinned Copper	Multi Core	LSZH	No	White	100	Dca	Type 1

SOLID CORE CABLES:

PART CODE	NO. OF CORES	CONDUCTOR TYPE	MULTI OR SOLID CORE	SHEATHING	SCREENED (Y/N)	COLOUR	LENGTH (METERS)	EUROCLASS	BS4737 TYPE
CABS2HF/WH/SO/100	2	Tinned Copper	Solid Core	LSZH	Yes	White	100	Eca	Type 1
CABS2HF/WH/SO/100/C	2	Tinned Copper	Solid Core	LSZH	Yes	White	100	Cca	Type 1
CABSHF/RD/SO/100/C	2	Tinned Copper	Solid Core	LSZH	Yes	Red	100	Cca	Type 1
CABS2HF/RD/SO/100/B	2	Tinned Copper	Solid Core	LSZH	Yes	Red	100	B2ca	Type 1
CABS4HF/WH/SO/100	4	Tinned Copper	Solid Core	LSZH	Yes	White	100	Eca	Type 1
CABS4HF/WH/SO/100/D	4	Tinned Copper	Solid Core	LSZH	Yes	White	100	Dca	Type 1
CABS4HF/RD/SO/100/C	4	Tinned Copper	Solid Core	LSZH	Yes	Red	100	Cca	Type 1
CABS4HF/RD/SO/100/B	4	Tinned Copper	Solid Core	LSZH	Yes	Red	100	B2ca	Type 1



BELDEN EQUIVALENT CABLES:

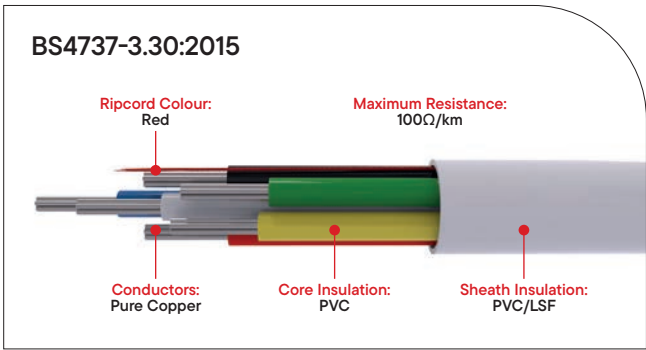
PART CODE	NO. OF CORES	CONDUCTOR TYPE	MULTI OR SOLID CORE	SHEATHING	SCREENED (Y/N)	COLOUR	LENGTH (METERS)	EUROCLASS	BS4737 TYPE
CABS8723HF/GY/100/D	4	Tinned Copper	Multi	LSZH	Yes	Grey	100	Dca	Type 1
CABS8723HF/GY/100/C	4	Tinned Copper	Multi	LSZH	Yes	Grey	100	Cca	Type 1
CABS8723HF/GY/100/B	4	Tinned Copper	Multi	LSZH	Yes	Grey	100	B2ca	Type 1
CABS8723HF/GY/300/B	4	Tinned Copper	Multi	LSZH	Yes	Grey	300	B2ca	Type 1
CABS9538HF/GY/100/D	8	Tinned Copper	Multi	LSZH	Yes	Grey	100	Dca	Type 1
CABS9538HF/GY/100/C	8	Tinned Copper	Multi	LSZH	Yes	Grey	100	Cca	Type 1
CABS9538HF/GY/100/B	8	Tinned Copper	Multi	LSZH	Yes	Grey	100	B2ca	Type 1





TYPE 2
PROFESSIONAL TINNED COPPER

- Type 2: BS4737-3.30:2015 Cables
- Conductor: Professional Tinned Copper
- Rip Cord Colour: Red
- Core Insulation: PVC
- Sheathing Insulation: PVC/LSF (Low Smoke and Fume)
- Maximum Resistance: 100Ω/km



MULTI CORE CABLES:

PART CODE	NO. OF CORES	CONDUCTOR TYPE	MULTI OR SOLID CORE	SHEATHING	SCREENED (Y/N)	COLOUR	LENGTH (METERS)	EUROCLASS	BS4737 TYPE
CAB4/WH/100M	4	Tinned Copper	Multi Core	PVC	No	White	100	Eca	Type 2
CAB4/BR/100M	4	Tinned Copper	Multi Core	PVC	No	Brown	100	Eca	Type 2
CABS4/WH/100M	4	Tinned Copper	Multi Core	PVC	Yes	White	100	Eca	Type 2
CABS4/WH/200M	4	Tinned Copper	Multi Core	PVC	Yes	White	200	Eca	Type 2
CAB6/WH/100M	6	Tinned Copper	Multi Core	PVC	No	White	100	Eca	Type 2
CAB6/WH/200M	6	Tinned Copper	Multi Core	PVC	No	White	200	Eca	Type 2
CAB6/WH/300M	6	Tinned Copper	Multi Core	PVC	No	White	300	Eca	Type 2
CAB6/WH/500M	6	Tinned Copper	Multi Core	PVC	No	White	500	Eca	Type 2
CAB6/BR/100M	6	Tinned Copper	Multi Core	PVC	No	Brown	100	Eca	Type 2
CABS6/WH/100M	6	Tinned Copper	Multi Core	PVC	Yes	White	100	Eca	Type 2
CABS6/WH/200M	6	Tinned Copper	Multi Core	PVC	Yes	White	200	Eca	Type 2
CABS6/WH/500M	6	Tinned Copper	Multi Core	PVC	Yes	White	500	Eca	Type 2
CAB8/WH/100M	8	Tinned Copper	Multi Core	PVC	No	White	100	Eca	Type 2
CAB8/WH/200M	8	Tinned Copper	Multi Core	PVC	No	White	200	Eca	Type 2
CAB8/WH/300M	8	Tinned Copper	Multi Core	PVC	No	White	300	Eca	Type 2
CAB8/WH/500M	8	Tinned Copper	Multi Core	PVC	No	White	500	Eca	Type 2
CAB8/BR/100M	8	Tinned Copper	Multi Core	PVC	No	Brown	100	Eca	Type 2
CABS8/WH/100M	8	Tinned Copper	Multi Core	PVC	Yes	White	100	Eca	Type 2
CABS8/WH/200M	8	Tinned Copper	Multi Core	PVC	Yes	White	200	Eca	Type 2
CABS8/WH/500M	8	Tinned Copper	Multi Core	PVC	Yes	White	500	Eca	Type 2
CAB12/WH/100M	12	Tinned Copper	Multi Core	PVC	No	White	100	Eca	Type 2
CAB12/WH/200M	12	Tinned Copper	Multi Core	PVC	No	White	200	Eca	Type 2
CAB12/WH/300M	12	Tinned Copper	Multi Core	PVC	No	White	300	Eca	Type 2
CABS12/WH/100M	12	Tinned Copper	Multi Core	PVC	Yes	White	100	Eca	Type 2
CABS12/WH/500M	12	Tinned Copper	Multi Core	PVC	Yes	White	500	Eca	Type 2
CAB6/WH/LSF/100	6	Tinned Copper	Multi Core	LSF	No	White	100	Eca	Type 2
CAB8/WH/LSF/100	8	Tinned Copper	Multi Core	LSF	No	White	100	Eca	Type 2
CAB8/WH/LSF/200	8	Tinned Copper	Multi Core	LSF	No	White	200	Eca	Type 2
CAB8/WH/LSF/500	8	Tinned Copper	Multi Core	LSF	No	White	500	Eca	Type 2
CABS8/WH/LSF/100	8	Tinned Copper	Multi Core	LSF	Yes	White	100	Eca	Type 2
CABS8/WH/LSF/200	8	Tinned Copper	Multi Core	LSF	Yes	White	200	Eca	Type 2

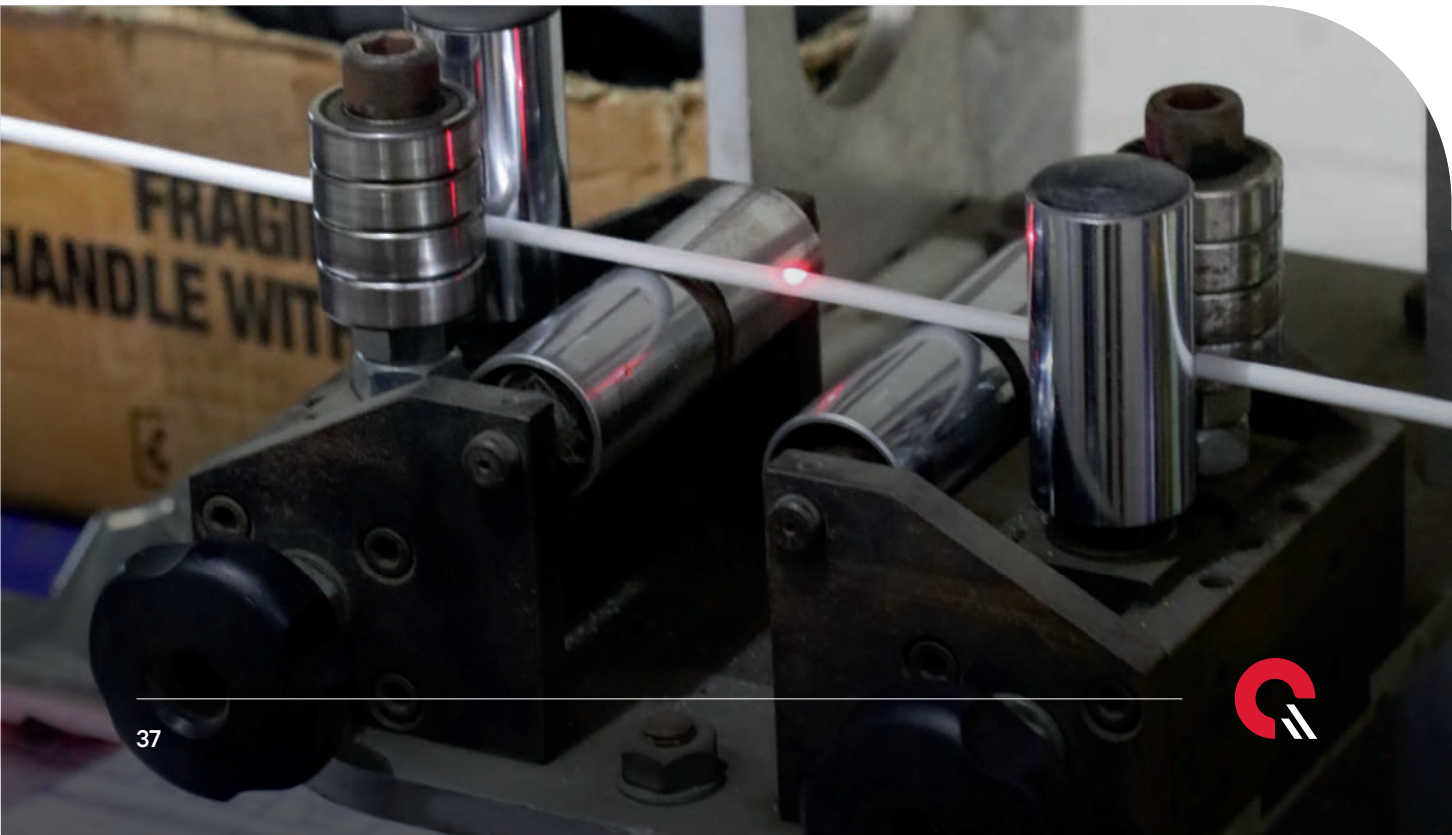


POWER & DATA CABLES:

PART CODE	NO. OF CORES	CONDUCTOR TYPE	MULTI OR SOLID CORE	SHEATHING	SCREENED (Y/N)	COLOUR	LENGTH (METERS)	EUROCLASS	BS4737 TYPE
CABS4/WH/100/PD	4	Tinned Copper	Multi Core	PVC	Yes	White	100	Eca	Type 2
CABS4/WH/300/PD	4	Tinned Copper	Multi Core	PVC	Yes	White	300	Eca	Type 2
CABS6/WH/100/PD	6	Tinned Copper	Multi Core	PVC	Yes	White	100	Eca	Type 2
CABS6/WH/500/PD/PL	6	Tinned Copper	Multi Core	PVC	Yes	White	500	Eca	Type 2
CABS8/WH/100/PD	8	Tinned Copper	Multi Core	PVC	Yes	White	100	Eca	Type 2
CABS8/WH/500/PD	8	Tinned Copper	Multi Core	PVC	Yes	White	500	Eca	Type 2

BELDEN EQUIVALENT CABLES:

PART CODE	NO. OF CORES	CONDUCTOR TYPE	MULTI OR SOLID CORE	SHEATHING	SCREENED (Y/N)	COLOUR	LENGTH (METERS)	EUROCLASS	BS4737 TYPE
CABS8723HD/BK/100/F	4	Tinned Copper	Multi	HDPE	Yes	Black	100	Fca	Type 2
CABS8723HD/BK/200/F	4	Tinned Copper	Multi	HDPE	Yes	Black	200	Fca	Type 2
CABTP2X2/GY/100	4	Tinned Copper	Multi	PVC	Yes	Grey	100	Eca	Type 2
CABTP2X2/WH/100	4	Tinned Copper	Multi	PVC	Yes	White	100	Eca	Type 2
CABTP2X2/GY/LSF/100	4	Tinned Copper	Multi	LSF	Yes	Grey	100	Eca	Type 2
CABS8777HD/BK/100/F	6	Tinned Copper	Multi	HDPE	Yes	Black	100	Fca	Type 2
CABTP3X2/IC/AB	6	Tinned Copper	Multi	PVC	Yes	Grey	100	Eca	Type 2
CABS9538HD/BK/100/F	8	Tinned Copper	Multi	HDPE	Yes	Black	100	Fca	Type 2
CABS8/GY/LSF/100	8	Tinned Copper	Multi	LSF	Yes	Grey	100	Eca	Type 2
CABS8/GY/LSF/300	8	Tinned Copper	Multi	LSF	Yes	Grey	300	Eca	Type 2
CABS9540HD/BK/100/F	10	Tinned Copper	Multi	HDPE	Yes	Black	100	Fca	Type 2
CABS10/GY/LSF/100	10	Tinned Copper	Multi	LSF	Yes	Grey	100	Eca	Type 2
CABS10/GY/LSF/200	10	Tinned Copper	Multi	LSF	Yes	Grey	200	Eca	Type 2
CABS9540HF/GY/100/D	10	Tinned Copper	Multi	LSZH	Yes	Grey	100	Dca	Type 2
CABS9540HF/GY/100/C	10	Tinned Copper	Multi	LSZH	Yes	Grey	100	Cca	Type 2

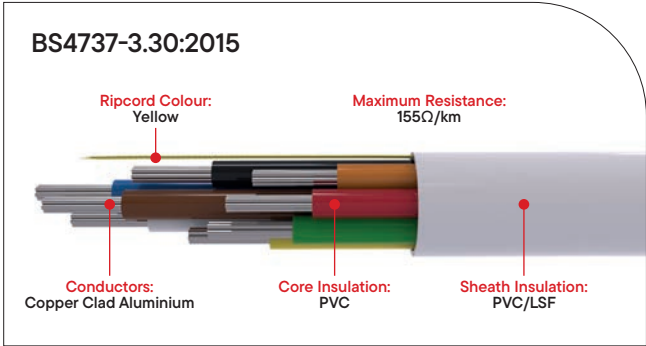


TYPE 3 - INTRUDER ALARM CABLE



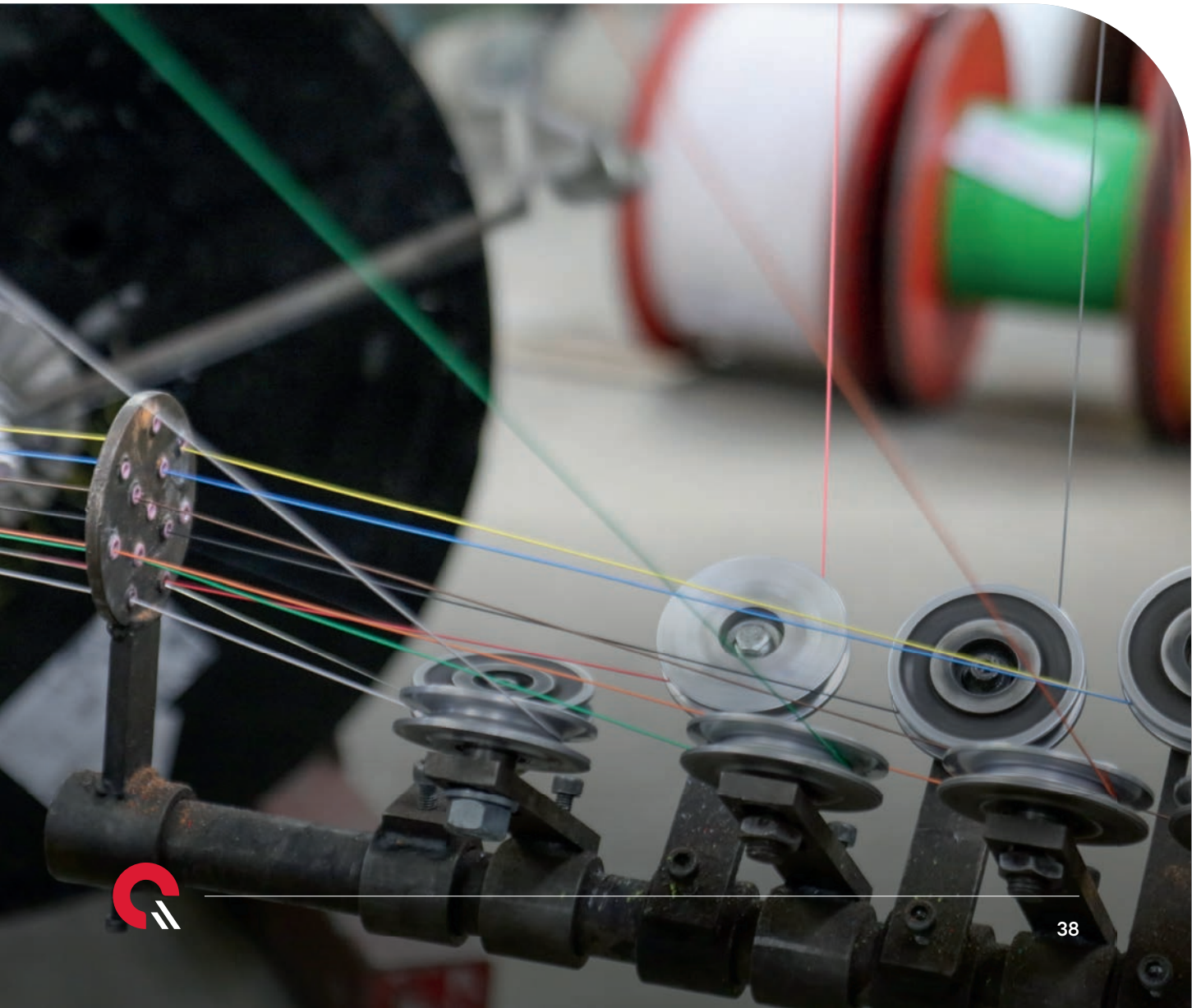
TYPE 3
COPPER CLAD ALUMINIUM (CCA)

- Type 3: BS4737-3.30:2015 Cables
- Conductor: Copper Clad Aluminium
- Rip Cord Colour: Yellow
- Core Insulation: PVC
- Sheathing Insulation: PVC/LSF (Low Smoke and Fume)
- Maximum Resistance: 155Ω/km



MULTI CORE CABLES:

PART CODE	NO. OF CORES	CONDUCTOR TYPE	MULTI OR SOLID CORE	SHEATHING	SCREENED (Y/N)	COLOUR	LENGTH (METERS)	EUROCLASS	BS4737 TYPE
CABCCA6/WH/100M	6	Copper Clad Aluminium	Multi Core	PVC	No	White	100	Eca	Type 3
CABCCA8/WH/100M	8	Copper Clad Aluminium	Multi Core	PVC	No	White	100	Eca	Type 3
CABCCAS8/WH/100M	8	Copper Clad Aluminium	Multi Core	PVC	Yes	White	100	Eca	Type 3
CABCCA8/WH/LSF/100	8	Copper Clad Aluminium	Multi Core	LSF	No	White	100	Eca	Type 3





**CUSTOMER SERVICE/
TECH SUPPORT**

UNIT 1, 14 PORTLAND STREET,
SOUTHPORT,
PR8 1LJ, UK

ACCOUNTS TEAM

110B WALSALL ROAD,
CANNOCK, STAFFORDSHIRE,
WS11 0JB, UK

**MANUFACTURING/
DISTRIBUTION**

125 PASTURE ROAD,
MORETON, WIRRAL,
CH46 4TH, UK

MAIN: +44 (0)151 606 1000

**INFO@CQR.CO.UK
TECH@CQR.CO.UK**

CQR.CO.UK



DISTRIBUTED BY: